

Betterment of Nebraska WEBSITE LINKS

The following list of WEBSITE LINKS is provided to serve as an aide to those who have a desire to learn more about Economic Development in the State of Nebraska. It by no means is all inclusive and if you have discovered a website that has been beneficial, please send it to me at NINjack@windstream.net , we will review it and consider adding it to this list. A majority of the following information is furnished through the courtesy of the University of Nebraska Rural Development Initiative.

The programs are listed following the providing entity, stated in **green**. They contain a brief description of each program and can be accessed by clicking on the website name.

Rural Development Programs in Nebraska

University-Wide Programs

Nebraska Forest Service: This website provides some useful information about Nebraska forest resources and about the agency and the services they provide. It provides education and services to the people of Nebraska covering all aspects of planting, protection, care, and utilization of our forest and tree resources. You can access the website by going to <http://www.nfs.unl.edu> .

University of Nebraska Public Policy Center: This center focuses on five areas of public policy: Behavioral health services and systems – Access to governmental services – Information technology in health and human services – Public participation in policy – Water resource policy. Their services include: Research and Evaluation Design and Analysis – Strategic planning and Facilitation Services – Program Management and Integration Services – Grants Development and Management – Multimedia Development and Hosting. To learn more about this center go to their website at <http://ppc.unl.edu/> .

University of Nebraska Rural Initiative: The University of Nebraska rural Initiative identifies opportunities in rural Nebraska and catalyzes experimentation, innovation and collaboration in partnership with rural areas while promoting sustainable and socially beneficial use of resources. To learn more about the Rural Initiative go to their website at <http://ruralinitiative.nebraska.edu> .

University of Nebraska Technology Park: The University of Nebraska Technology Park is the first planned business campus in Nebraska striving to provide the best place to begin or to relocate your technology-focused company. They strive to nurture start-up and emerging technologies. To learn about the many facets of the Technology Park go to their website at <http://www.nutechpark.com> .

UNL Programs

Agricultural Research Division (ARD): The mission of the Agricultural Research Division (ARD) is to conduct problem-solving and fundamental research that addresses priority issues facing Nebraska's agricultural and food industries; to provide the knowledge base essential for managing our natural resources; to promote family well-being and community development; and to educate future scientists through hands-on experiences. To learn more about (ARD) go to their website at <http://ard.unl.edu/home> .

Bureau of Business Research (BBR): The Bureau of Business Research (BBR) is an applied economic and business research entity of the College of Business Administration at the University of Nebraska-Lincoln. It provides relevant information and insightful data on economic conditions, in Nebraska, the Great Plains, and the nation as a general service to individuals and businesses in the state. The BBR regularly publishes reports summarizing its sponsored research studies and also publishes outlooks and analyses in the newsletter "The Nebraska Economy". More information on the BBR is contained on their website at <http://www.bbr.unl.edu/> .

Center for Advanced Land Management Information Technologies (CALMIT): The Center for Advanced Land Management Information Technologies is recognized as a center-of-excellence for education and research focused on: Remote Sensing – Geographic Information Systems – and Global Positioning Systems. More information on the CALMIT is contained on their website at <http://calmit.unl.edu/> .

Center for Agricultural & Food Industrial Organization (CAFIO): Founded June 1, 2001, the Center for Agricultural & Food Industrial Organization (CAFIO) is a Web-based center dedicated to impartial economic analysis of the structure, conduct, and performance of the agricultural and food industry. Its global mission is to bring together scholars from around the world who share an interest in the analysis of horizontal and vertical relationships within the food supply chain and their implications for competition and welfare. Its local mission is to conduct and disseminate timely economic analysis of agricultural and food industrial issues of critical importance to farmers and ranchers in Nebraska, train students and other professionals in agricultural and food industrial organization, and serve as a point of contact between research faculty and the public at large. The CAFIO website may be found at <http://cafio.unl.edu/>

Center for Applied Rural Innovation (CARI): IANR Vision

The Institute of Agriculture and Natural Resources serves Nebraska by providing internationally-recognized science and education to assure the state's competitiveness in a changing world.

IANR Mission

To fulfill this vision with its firm focus on Nebraska, we must achieve world-class excellence in: the life sciences, ranging from molecular to global systems; sustainable food, fiber and natural resource systems that support a bio-based economy; economics and environments for a sustainable future; and human capital development of children, youth, and families.

We do that by: advancing knowledge along the continuum from fundamental research to application and education necessary to meet the current and emerging needs of the state; preparing professionals for the future; creating and implementing solutions to critical problems; expanding partnerships across UNL, the NU system, and beyond; and cultivating public-private partnerships. In short, we fulfill our mission by being at work for Nebraska.

Additional information pertaining to IANR may be found on their website at <http://www.ianr.unl.edu/>.

Center for Grassland Studies (CGS) : The CGS mission is to implement focused, interdisciplinary research, educational and service programs and activities that emphasize the role of grasslands as a natural resource and conservation measure and that enhance the efficiency, profitability, sustainability, and aesthetic value of grasslands, wetlands and turfs. Additional information pertaining to CGS may be found on their website at <http://www.grassland.unl.edu/>.

Center for Science, Mathematics, and Computer Education (CSMCE): The mission of the Center for Science, Mathematics & Computer Education (CSMCE) is to support UNL faculty engaged in educational activities focused on improving the teaching and learning of science, technology, engineering and mathematics (STEM) at both the K-12 and collegiate level. With support from UNL's Colleges of Arts and Sciences, Education and Human Sciences, and Agricultural Sciences and Natural Resources, the CSMCE works to build partnerships among leaders in the higher education and K-12 education sectors that further our basic mission. For additional information on the priorities and programs set forth by CSMCE go to their website at <http://www.unl.edu/scimath/>.

Conservation and Survey Division (CSD): Conservation and Survey Division Mission – The Conservation and Survey Division, the natural resource survey component of the School of Natural Resources, is a unique, multi-disciplinary research, service and data-collection organization established by state statute in 1921. The Division’s mission is to investigate and record information about Nebraska’s geologic history, its rock and mineral resources, the quantity and quality of its water resources, land cover and other aspects of its geography, as well as the nature, distribution and uses of its soils. Additional information pertaining to CSD may be found by going to their website at <http://csd.unl.edu> .

Department of Community and Regional Planning (CRP): The Department offers a Master of Community and Regional Planning degree leading to the Nationally Accredited MCRP degree from UNL or one of three Dual degree programs: Community and Regional Planning and Law, Community and Regional Planning and Architecture, or Community and Regional Planning and Civil Engineering. For more information pertaining to (CRP) refer to their website at <http://planning.unl.edu/>

Nebraska EDGE (Enhancing, Developing, and Growing Entrepreneurs): The Nebraska **EDGE** mission is to promote community and economic growth through small business and management training. Since 1993, EDGE has helped over 2,500 individuals transform their visionary ideas into viable business opportunities. The results have been new business start-ups, business expansions, and a growing community economic base.

The EDGE program offers business development training to help individuals polish their skills, expand their knowledge, and discover how to handle the real-world conditions that impact their new and existing businesses. Although the reasons for participating in EDGE vary; the results are the same...better and more viable business operations.

For additional information pertaining to Nebraska Edge refer to their website at <http://nebraskaedge.unl.edu/> .

University of Nebraska-Lincoln Extension: Goal – Position Nebraska Extension for Future Success

UNL Extension is an organization that is learner centered, provides trusted subject matter content, and is professional, relevant, and nimble in its response

UNL Extension is committed to:

- teaching clientele to make more informed decisions
- engaging stakeholders in the identification of critical issues to be addressed
- addressing, for today and the future, the issues that fall within the spires of IANR
- integrating the work of UNL Extension with the Agricultural Research Division, the College of Agriculture and Natural Resources, and the College of Education and Human Sciences
- making resource based decisions based upon the future needs of the organization
- creating public/private partnerships with companies to expand the educational and financial resources of UNL Extension
- programming with methodology that is appropriate to the 21st century learners
- creating for 4-Hers opportunities that provide enthusiasm for science-engineering technology, encourage career exploration and development of life skills
- evaluating and reporting the impact of program accomplishments
- maintaining strong relationships with key Extension decision makers in Nebraska, the region, and nationally

For more information pertaining to the University of Nebraska-Lincoln Extension please refer to their website at <http://www.extension.unl.edu> .

ReTree Nebraska: ReTree Nebraska is a 10-year cooperative initiative to raise public awareness of the value of trees, reverse the decline of Nebraska's community tree and forest resources and improve the health and sustainability of community trees and forests across our state for future generations.

The primary goal of ReTree Nebraska is to work in partnership with people across Nebraska to foster the proper planting and maintenance of 1 million new trees by 2017.

To find additional information pertaining to ReTree Nebraska go to their website at www.retreenebraska.unl.edu/ .

The Food Processing Center (FPC): The University of Nebraska–Lincoln Extension FOOD website connects you to information, resources and food experts about food from farm to fork.

Who can find helpful information at food.unl.edu?

- Consumers
- Economic developers
- Educators/teachers
- Farmers/ranchers
- Farmers market managers
- Food entrepreneurs/start-ups
- Food manufacturers
- Food service/nutrition/health professionals
- Institutional food service
- Livestock producers
- Meat processors
- Media
- Public official/policy makers
- Restaurateurs
- Retail food outlets/grocers
- Students
- Youth mentors (e.g., 4-H, scout leader, etc.)
- YOU!

For additional information on the FPC go to their website located at <http://fpc.unl.edu/> .

Industrial Agriculture Products Center (IAPC): Our mission at IAPC is to improve the economy of Nebraska and the Great Plains region by developing uses for agricultural raw materials. In today's agricultural markets, bountiful harvests do not guarantee economic success, and in fact, often drive down prices. Industry also faces challenges; as environmental awareness increases, manufacturing products that work is not enough. The need to protect our air, land, and water has led to increased government regulation and compels the development of "cleaner and greener" technologies and products.

"The benefits of bio-energy were recognized in Title III of the Agricultural Risk Protection Act of 2000 and Executive Order 13134 which set the goal of tripling the use of bio-fuels and bio-based products by 2010. By utilizing the renewable resources on America's farmland, we can generate electricity, fuel our vehicles, and create a variety of products, all of which can provide new revenue streams to farmers." --Jeremy Ames and Carol Werner, "Revitalizing the Farm Economy via Renewable Energy Development," *Bio-Cycle*, October, 2001.

Additional information on IAPC can be found on their website at <http://agproducts.unl.edu/> .

National Drought Mitigation Center (NDMC): The National Drought Mitigation Center (NDMC) helps people and institutions develop and implement measures to reduce societal vulnerability to drought, stressing preparedness and risk management rather than crisis management. Most of the NDMC's services are directed to state, federal, regional, and tribal governments that are involved in drought and water supply planning.

The NDMC, established in 1995, is based in the School of Natural Resources at the University of Nebraska-Lincoln. The NDMC activities include maintaining an information clearinghouse and drought portal; drought monitoring, including participation in the preparation of the U.S. Drought Monitor and maintenance of the web site (drought.unl.edu/dm); drought planning and mitigation; drought policy; advising policy makers; collaborative research; K-12 outreach; workshops for federal, state, and foreign governments and international organizations; organizing and conducting seminars, workshops, and conferences; and providing data to and answering questions for the media and the general public. The NDMC is also participating in numerous international projects, including the establishment of regional drought preparedness networks in collaboration with the United Nations' Secretariat for the International Strategy for Disaster Reduction.

For additional information pertaining to NDMC go to their website at <http://www.drought.unl.edu/>.

Nebraska Center for Energy Sciences Research (NCESR): The Nebraska Center for Energy Sciences Research (NCESR), a collaboration between the [Nebraska Public Power District \(NPPD\)](#) and the [University of Nebraska-Lincoln \(UNL\)](#), was established in April 2006 to conduct research on renewable energy sources, energy efficiency and energy conservation; and to expand economic opportunities and improve quality of life for Nebraska and the nation.

Mission

To conduct energy research that produces new technologies, processes and systems that provide new or significantly enhanced renewable energy sources and improves the quality of life and economic opportunity for all Nebraskans.

Goal

The overall goal of the Center is to develop research and education programs in energy sciences by fostering interdisciplinary collaboration among University of Nebraska-Lincoln faculty and with other research institutions, public-sector agencies, and private sector companies with similar interests. The Center supports both basic and applied research and has a broad mandate to explore a range of renewable energy opportunities (including bio-fuels, wind, and solar energy), as well as opportunities for energy conservation.

For more information pertaining to the NCESR go to their website at <http://ncesr.unl.edu/index.shtml>.

Nebraska Center for Entrepreneurship (NCE): The mission of the Nebraska Center for Entrepreneurship is to inspire and empower UNL students to become world-class entrepreneurs and to help create an entrepreneurial environment that encourages them to do it here. We fulfill this mission by:

- **Encouraging** students to consider ownership as an alternative career path;
- **Enabling** students to identify new business opportunities;
- **Training** students to understand and be able to accept the responsibilities of ownership;
- **Facilitating** mentor relationships with business owners in order to improve their odds for success through incubation, apprenticeship, and/or personal consultation; and
- **Connecting** students who have plans for new ventures and those who have the financial ability to make these plans become realities.

To learn more about NCE go to their website at http://cba.unl.edu/about/centers/ent/default.aspx#About_Mission .

Nebraska Cooperative Development Center (NCDC):

Mission

To build a strong, engaged, and sustainable network of people with access to local, state, and national resources, dedicated to allowing people to prosper in rural areas by helping them to work together to increase their incomes via cooperative development, and to help facilitate “value-added” opportunities.

Goals

- Create and/or expand successful group efforts, including cooperatives, that promote value-added agriculture and related types of entrepreneurship.
- Increase cooperation and sharing among producers, especially those who are interested in exploring the possibility of transitioning to a new type of agriculture.
- Provide customized and continuous service to producer groups throughout the life of relevant projects.
- Facilitate and support favorable public policy by increasing the awareness of rural people’s needs and the role of cooperative development.

To learn more about NCDC go to their website at <http://ncdc.unl.edu/> .

Office of Technology Development (OTD): At NUtech Ventures, we view ourselves as active R&D matchmakers who bring the private sector and academia together for mutually beneficial collaboration.

If you are interested in partnering with the University of Nebraska, you don't have to work with NUtech Ventures. We just think you'll *want* to.

- *We are focused on deals, not processes.* Our only metric is the number of companies, products, and jobs that trace their roots to the University of Nebraska.
- *We are fast.* Timing is of the utmost importance when launching a new product or a new company. We will work with an entrepreneurial sense of urgency so that you can meet your deadlines.
- *We are fair.* We do thorough market research using our business network to insure that our inventors, investors, and industry partners are getting the fairest deal possible. We don't just make up numbers; we base our deals on the data.
- *We are flexible.* We understand that emerging technology markets can be unpredictable. We will renegotiate contracts to accommodate unexpected changes in the market or economy so that you can be successful.

To gain additional information about OTD go to their website at <http://otd.unl.edu> .

Water Center: About the Water Center

Introduction

This site will give you easy access to the University of Nebraska-Lincoln's Water Center and its related facilities and key programs such as the UNL [Water Sciences Laboratory](#), all things Water at UNL via [UNL Water](#) as well as upcoming activities and events at the Water Center and online publications such as our quarterly [Water Current](#) newsletter.

The UNL Water Center coordinates, implements and facilitates water and water-related research, extension, teaching and outreach programming within the University of Nebraska system as a part of NU's [Institute of Agriculture and Natural Resources](#) and UNL's [School of Natural Resources](#). The Water Center has been a fixture at UNL for more than 40 years, being established as the Nebraska Water Resources Research Institute by Congressional mandate in 1964. It is one of a network of more than 54 water resources research institutes at Land Grant Universities nationwide. For more information about this network, go to the [National Institute for Water Resources](#).

To learn more about the Water Center go to their website at <http://watercenter.unl.edu/> .

UNK Programs

Center for Rural Research and Development: **Mission**

The College of Business and Technology serves Nebraska and the surrounding region by preparing students to compete in dynamic professional environments and promoting academic, social and economic development. The faculty and staff will achieve this mission by:

- Advancing knowledge through applied and pedagogical scholarship;
- Providing service to our stakeholders
- Providing student-centered educational opportunities including experiential learning;

Mission revised: August 2007

Vision

The College of Business and Technology will be recognized as a leading, professional college in Nebraska and surrounding region that promotes academic, social and economic development.

Vision Revised: August 2007

For more information pertaining to the Center for Rural Research and development visit their website at <http://www.unk.edu/acad/crrd/> .

Nebraska Business Development Center-Kearney Office (NBDC-Kearney): NBDC is a cooperative program of the [U.S. Small Business Administration](#), the College of Business Administration of the [University of Nebraska at Omaha](#), and the College of Business Administration at the [University of Nebraska Kearney](#). Statewide, NBDC provides direct management and technical assistance to more than 2,000 businesses in Nebraska each year. Basic services are provided free of charge.

For more information pertaining to (NBDC-Kearney) visit their website at <http://www.unk.edu/acad/nbdc/index.php> .

NBDC - UNK
West Center Bldg, Rm 135
1917 West 24th Street
Kearney, NE 68849-4440
308

UNMC Programs

Consumer Health Information Resource Service (CHIRS): The McGoogan Library of Medicine provides such information to Nebraska residents free of charge through our Consumer Health Information Resource Service (CHIRS).

A Health Sciences Librarian will research your condition and provide a tailored package of information that may include: journal articles, book chapters, pamphlets and web resources.

For additional information pertaining to the (CHIRS) visit their website at <http://www.unmc.edu/library/consumer.htm> .

Nebraska Center for Rural Health Research: UNMC Mission

The mission of the University of Nebraska Medical Center is to improve the health of Nebraska through premier educational programs, innovative research, the highest quality patient care, and outreach to underserved populations.

The Nebraska Center for Rural Health Research, formed in 1990, is organized as a multi-campus Center located within the College of Public Health, University of Nebraska Medical Center (UNMC).

The broad mission of the Center is to conduct research and analysis related to improving health care delivery in rural areas. The Center focuses on special populations among rural residents, including the elderly, children, minorities, mentally ill, under and uninsured, and new immigrants whose needs for assistance are unique.

Specific projects include analysis of national policies, studies of market-driven change in rural areas, studies of use of services by the elderly, and studies of access to, and utilization of health services by minority populations.

To learn more about the Nebraska Center for Rural Health Research visit their website at <http://www.unmc.edu/rural/> .

Nebraska Rural Health Works (NeRHW): The Nebraska Center for Rural Health Research, formed in 1990, is organized as a multi-campus Center located within the College of Public Health, University of Nebraska Medical Center (UNMC).

The broad mission of the Center is to conduct research and analysis related to improving health care delivery in rural areas. The Center focuses on special populations among rural residents, including the elderly, children, minorities, mentally ill, under and uninsured, and new immigrants whose needs for assistance are unique.

Specific projects include analysis of national policies, studies of market-driven change in rural areas, studies of use of services by the elderly, and studies of access to, and utilization of health services by minority populations.

To learn more about (NeRHW) visit their website at <http://www.unmc.edu/rural/NeRHW>

Rural Health Education Network (RHEN): RHEN plays a crucial role in addressing health care workforce shortages in rural Nebraska. This is accomplished through partnerships with rural communities, primary health care providers, and Nebraska's Area Health Education Centers. Since the program's inception, RHEN has built successful programs that have developed a cadre of health care professionals serving rural Nebraska.

In 1991, the Nebraska Legislature passed a bill (LB 625e) and created the Rural Health Education Network to address the shortage of health professionals in rural Nebraska. UNMC partnered with communities across the state to develop a network of volunteer faculty who serve as preceptors for health profession students during their rural rotations. This allows students to receive part of their professional education in sites away from the main UNMC campuses.

The scope of the RHEN Office expanded in 1993 to include developing programs and promoting health care careers to students from rural communities.

Today, the Rural Health Education Network is the umbrella under which most of UNMC's rural outreach education activities are developed. Throughout the pages of our website, we hope to provide you with information about our programs. Together we continue to make a difference!

Mission: The Rural Health Education Network at the University of Nebraska Medical Center College of Public Health is committed to building strong partnerships at local, state, and national levels to develop a workforce of professionals to meet the health care needs of people living in rural and under served communities in Nebraska.

Vision: The Rural Health Education Network at the University of Nebraska Medical Center College of Public Health will be recognized as a national and international leader in workforce development with regards to addressing health care workforce shortages in rural communities.

To learn more about (REHN) visit their website at <http://www.unmc.edu/rhen/> .

UNO Programs

Center for Public Affairs Research (CPAR): The Center for Public Affairs Research is a research and community outreach unit of the UNO College of Public Affairs and Community Service. Survey research support is a key component of CPAR's mission. CPAR is also the lead agency for the Nebraska State Data Center Program. This program is a cooperative program between the U.S. Census Bureau and individual states. This relationship has resulted in CPAR taking an active role in analyzing and disseminating information from the 2000 Census.

To learn more about CPAR go to their website at <http://www.unomaha.edu/~cpar> .

School of Public Administration: The mission of the School of Public Administration is to strengthen public service in a democratic and diverse society. This mission is accomplished through offering nationally-recognized, student-centered educational programs, generating distinctive original research, providing quality service to the university and the profession, and engaging communities in public service programs and activities.

To learn more about the School of Public Administration go to their website at <http://spa.unomaha.edu/> .

Nebraska Business Development Centers (NBDC): NBDC is a business development center. Business development centers operate in each state, the District of Columbia, Puerto Rico, and the Virgin Islands under provisions of the Small Business Development Center Act of 1980. NBDC was one of the eight pilot small business development centers. NBDC is fully certified by the Association of Small Business Development Centers.

To learn more about NBDC go to their website at: <http://nbdc.unomaha.edu/> .

Universities Collaborations

Rural Policy Research Institute (RUPRI): **Mission**

RUPRI's mission in support of this vision is to:

- Provide unbiased analysis and information on the challenges, needs, and opportunities facing rural America.
- Spur public dialogue and help policymakers understand the impacts of public policies and programs on rural people and places.

Commitment

RUPRI in pursuing this mission commits to:

- Provide timely, empirically-based, and non-partisan advice and assistance to policymakers on the rural impacts of public policies and programs and on options for improving the prospects for rural people and places.
- Foster understanding of and the search for effective solutions to the challenges of rural America by providing safe venues for people with a stake in the future of rural America to discuss openly concerns, issues, and opportunities.
- Encourage collaboration and common purpose among scholars to pursue research that supports effective policy and practice, and among institutions and agencies that have the expertise, resources, and responsibilities to impact rural people and places.
- Promote innovative, collaborative, and systems-based approaches to rural issues that engage decision-makers and rural people at local, regional, state, national, and international levels.

To learn more about RUPRI go to their website at <http://www.rupri.org/>.

State – Based Programs

Department of Agriculture (NDA): Welcome to the Nebraska Department of Agriculture's Home Page. I'm glad you have taken the time to learn more about our agency and Nebraska's diverse agriculture industry. Nebraska is a world-class leader in producing a high-quality, abundant, and an affordable food supply, made possible by our state's farmers and ranchers.

The products that are raised here are diverse, and representative of the ingenuity of Nebraska producers to address the varied climate and geology found in this state. Field crops, like corn and soybeans, fair particularly well in the rich, fertile farmlands of the Platte Valley, but can be found in most parts of the state. Producers also raise grain sorghum, mostly in the south; potatoes in several areas that have pockets of sandy soil; and wheat, sugar beets, and dry edible beans in the more arid Panhandle and southwest. While some crops depend on timely rains for success, Nebraska is fortunate to have an abundance of water. About 8 million acres of Nebraska's field crops benefit from irrigation, through the nearly 24,000 miles of streams and rivers, numerous reservoirs, and vast aquifers that underlie most of the state.

Our animal industry is also strong. Cattle can be found in all of Nebraska's 93 counties, and thousands of cows and calves spend their spring and summer grazing in the rolling, lush pastures of the north central Sandhills region. Swine, dairy cattle, and poultry also are in abundance and are generally raised in the more diversified, eastern part of the state.

Nebraska agriculture doesn't stop with these traditional, Plains agriculture products. Looking for ways to diversify and receive more return on their investments, Nebraska producers are venturing into specialty markets. There're grapes, buffalo, elk, orchard fruits, ostrich, tomatoes, and fish, just to name a few items.

The importance of agriculture in Nebraska continues past the farm gate. The transportation, financing, warehousing, and processing of products all create additional investment in the state's economy. Taking all aspects into consideration, the economic contributions of agriculture make it the number one industry in this state. One in four Nebraskans depends on agriculture for employment, and it's the hard work and devotion of these folks that has made Nebraska a leader in national agriculture rankings. To view the statistics, [click here](#).

It's these facts that drive us here at the Nebraska Department of Agriculture; we want to keep the state's top industry viable for future generations and uphold our reputation as a national leader in feeding the nation and world. So, take a look around our website, and if you don't find the information you're searching for, please don't hesitate to call us at (800) 831-0550. Thanks for visiting.

For additional information visit the NDA website at <http://www.agr.state.ne.us/index.htm>

Department of Economic Development (DED): The Nebraska Department of Economic Development (DED) is the official lead economic development agency for Nebraska. Created by the Legislature in 1967, DED's emphasis is growing and diversifying the state's "economic base," bringing new dollars into the state.

Mission

The Nebraska Department of Economic Development Mission is:
To provide quality leadership and services that enable Nebraska communities, businesses, and people to succeed in a global economy. We are here, equipped and ready, to assist you and your community in developing and capitalizing on economic development opportunities.

For additional information on the DED visit their website at <http://www.neded.org/> .

DED: Ag and Eco Tourism: The program identifies new development opportunities in the area of experimental tourism. For additional information on the Ag and Eco Tourism program call Tom Tabor at 402-471-7755 or go to their website at http://industry.visitnebraska.org/index.php?option=com_content&view=art .

DED: Business Retention & Expansion Survey Program: DED's mission is to provide quality leadership and services that enable Nebraska communities, businesses, and people to succeed in a global economy. To learn more about this survey program go their website at <http://www.neded.org/files/businessdevelopment/library/TargetIndStudy.pdf> .

DED: Building Entrepreneurial Communities Program: All the tools and resources you'll ever need for community success are found right here at your fingertips. Click on [Grants](#) to find Applications, Business information, Grant Administrators, Document/Library/ & Forms, and Housing information. Click on [Community Info](#) to find Community Data Information, Documents/Library & Forms, Financial Assistance, and Community Improvement. Click on [Business](#) to find information on Business Development. For more information on the Building Entrepreneurial Communities Program go to their website at <http://www.neded.org/community> .

DED: Nebraska Business Development Research:

Why Nebraska

Nebraska is truly right-in-the-middle-of-it-all offering an endless array of advantages that make living, working, and doing business here a wonderful and rewarding experience. Nebraska is a state that balances and blends economic opportunity with lifestyle; offers a wide variety of employment opportunities; has minimal commute times, safe communities and life-long learning prospects; provides variety and accessibility to natural, recreational and lifestyle amenities; has a great sense of place offering authenticity and realness featuring interesting older structures with new; blends a range of public space with commercial and personal spaces; has a bustle and buzz of varied activities; boasts exceptional environmental air and water quality, diverse populations, progressive thinking, and innovative and inclusive attitudes. It is this high quality of life that has created an environment where the possibilities for prosperity and happiness are endless.

For additional information on Nebraska Business Development Research go to the following website <http://www.neded.org/business/why-nebraska> .

DED: Nebraska Certified Community Program: Community Development Certified Community Application

For information on the Nebraska Certified Community Program go to their website at <http://www.neded.org/economic-development-certified-community/application> .

DED: Community Development Assistance Act (CDAA):

The Community Development Assistance Act (CDAA) was created in 1985 by the Nebraska Legislature to encourage financial support by businesses to community betterment organizations in their efforts to implement community service and development projects in chronic economically distressed areas.

CDAA empowers the Department of Economic Development to distribute a 40 percent state tax credit to businesses, corporations, insurance firms or financial institutions or individuals that make eligible contributions of cash, services or materials to approved community betterment projects.

To learn more about the CDAA go to their website at <http://neded.org/community/community-info/financial-assistance/community-development-assistance-act-cdaa> .

DED: Community Development Block Grant (CDBG): The Community Development Block Grant (CDBG) program provides Nebraskans with safe, affordable and accessible housing and infrastructure; quality jobs and investment through financing new and expanding businesses. Created under the Housing and Community Development Act of 1974, the CDBG program merged seven categorical programs into a pool of community development funds yearly distributed according to a formula weighing population and measures of distress (poverty, age of housing, housing overcrowding, and growth lag). Grantees now determine the activities to be funded so long as activities are eligible and meet one of three broad national program objectives. HUD CDBG rules are found [here](#) under “About CDBG ...Community Development Block Grant Program”. For more information on CDBG go their website at <http://www.neded.org/community/grants/applications/cdbg> .

DED: CDBG for Business Development: The Community Development Block Grant (CDBG) program provides Nebraskans with safe, affordable and accessible housing and infrastructure; quality jobs and investment through financing new and expanding businesses. Created under the Housing and Community Development Act of 1974, the CDBG program merged seven categorical programs into a pool of community development funds yearly distributed according to a formula weighing population and measures of distress (poverty, age of housing, housing overcrowding, and growth lag). Grantees now determine the activities to be funded so long as activities are eligible and meet one of three broad national program objectives. HUD CDBG rules are found [here](#) under “About CDBG ...Community Development Block Grant Program”. For additional information regarding CDBG go to their website at: <http://neded.org/community/grants/applications/cdbg> .

DED: CDBG Planning Grants: Community Development Block Grant Nebraska
Department of Economic Development

**INSTRUCTIONS FOR COMPLETING PERFORMANCE REVIEW
MONITORING CHECKLIST FOR PLANNING GRANTS**

There are three sections in the Community Development Block Grant (CDBG) program Performance Review Monitoring Checklist for Planning Grants. Planning grantees will complete all sections and submit the enclosed form with required documentation and Chief Elected Official signature, as indicated, to the Department of Economic Development within thirty (30) days of receipt.

The information being collected will enable the Department to satisfy monitoring requirements.

Instructions are provided for each item, as necessary, in the three sections. On page 1, The Program Representative will be responsible for completing: Grantee, CDBG Grant Number, and Program Rep. The Grantee will be responsible for completing: Person Completing Form, Phone Number, and Date Report Completed. If there is a need for additional information or clarification, please contact your Program Representative.

To learn more pertaining to CDBG Planning Grants go to their website at:

[http://www.neded.org/files/crd/cdbg_forms/CDBG Planning Grantee Portion Checklist.pdf](http://www.neded.org/files/crd/cdbg_forms/CDBG_Planning_Grantee_Portion_Checklist.pdf) .

DED: CDBG Public Infrastructure: Communities cannot develop or grow without basic elements in place, including clean drinking water, ultra-safe sewer and wastewater disposal systems, barrier-free sidewalks and public facilities, navigable streets and roadways, qualitative day care and senior care centers, vital emergency services and the comprehensive planning that makes these services and more possible. The department's programs offer communities financial and technical assistance to address their specific projects at the time when help is most needed. To learn more about CDBG Public Infrastructure go to their website at <http://neded.org/community/community-info/financial-assistance/improve-infrastructure> .

DED: Field Staff: [Contact](#)

Administration & Operations Richard Baier Bio Department Director 402-471-3747

richard.baier@nebraska.gov

Joyce Bjorklund Fiscal - Operations 402-471-3367 joyce.bjorklund@nebraska.gov

Lori Cole Administrative Assistant to the Director 402-471-3746...<http://www.neded.org/>

DED: Nebraska Innovation Zone Commission (NIZC): The Nebraska Innovation Zone Commission (NIZC) was established August 2005 per LB 546. The nineteen appointed Commissioners, representing three NRDs, the University of Nebraska, Nebraska Community Colleges, Class I and Class II cities, as well as Omaha, Lincoln and six Nebraska counties: Douglas, Sarpy, Cass, Saunders, Washington and Lancaster. The Commission held its first meeting October 5, 2005 at Mahoney State Park, near Ashland, NE.

The creation of the Nebraska Innovation Zone Commission is built upon the declaration that the area adjacent to the Interstate 80 corridor, running through the entire length of Nebraska' affords an excellent opportunity for business expansion, economic development, job creation, and education-business partnerships. This opportunity for growth is best realized through regional cooperation among the communities, businesses, and educational entities within the corridor to pursue common goals along this opportunity zone.

The NIZC shall advocate and recommend programs that encourage regional cooperation and foster community sustainability and economic development initiatives. Other areas of focus for the Commission are to encourage and support continuity, coordination and cooperation among national, state, multi community, and local economic development initiatives and service providers.

To learn more about the NIZC go to their website at <http://neded.org/nizc-about-the-commission> .

DED: Edgerton Quality Awards Program: The Edgerton Award program is based on the proven results of the Malcolm Baldrige National Quality Award criteria. Using criteria standard among world-class organizations, Nebraska businesses can excel in all areas of business development, including leadership, strategic planning, customer relations, human resources, knowledge management, process management and market results. Through the process of applying, companies engage in a self-assessment and receive a system-wide review and feedback report from external examiners.

The Edgerton Quality Awards Program is a service of the Nebraska Manufacturing Extension Partnership. The Nebraska Diplomats and Nebraska Section 1302 of the American Society for Quality sponsor the Edgerton Award. The Nebraska Department of Economic Development administers the program.

For more information on the Edgerton Quality Awards Program go to the website at http://www.neded.org/index2.php?option=com_content&do_pdf=1&id=54:

DED: Governor's Community Showcase Awards: The following results were found for **governors**, and **community**, and **showcase**, and **award**, and **is** [Community Development Week](#) Celebrating Success in Your Community What is Community Development Week? The National Community Development Association initiated National Community Development Week in 1986. This annual campaign is designed to give local as well as national...

<http://www.neded.org/community-development-week> . For more information on the

Governor's Community Showcase Awards go to this website:

<http://www.neded.org/search-neded?f=2&q=Governors+community+showcase+award+is>

DED: GROW Nebraska: GROW Nebraska™ is a non-profit organization, whose **mission** is focused on creating sustainable economic development. We do this by supporting entrepreneurs and small businesses through promotion, access to markets and education.

GROW Nebraska™ is the only program that is providing market entry and market access in the state. Since the start of the Nebraska Microenterprise Development Act, GROW Nebraska has help create and retain over 2,200 jobs. Currently GROW Nebraska™ has over 300 members and offers 20 business building services. It is our goal to bring Nebraska products and services to the global marketplace, and we have been successfully accomplishing that throughout our **history**. GROW has received numerous **awards** and achieved many **accomplishments**. The **Annual Report** outlines these successes.

The success of GROW can be attributed to its dedicated **staff** and statewide **board** and from the generous funds of our **partners and donors**. If you are interested in joining our team through volunteering, interning, or financially contributing, please contact **info@grownebraska.org**.

We believe in the talents and skills of the entrepreneurs and small businesses in Nebraska. We continuously promote **ethical shopping** and encourage you to **buy Nebraska products**. We also encourage green practices and have many **natural products**.

To learn more about GROW Nebraska go to their website at <http://www.growneb.com/> .

DED: HOME Program: [HOME Forms](#) 2011 Community Development Housing Organization (CHDO) Application Guidelines 2011 CHDO Application Guidelines .PDF or .DOC HOME Administration Manual Complete HOME Administration Manual in .pdf Chapter 1 - Welcome to HOME - .pdf or .doc Chapter 2 -...

For more information, start by going to this website: <http://www.neded.org/search-neded?q=HOME+Program> .

I-80 Rest Stop Information Program: For information on locations, regulations, and other pertinent information pertaining to I-80 Rest Stops in Nebraska go to this website: <http://www.docstoc.com/docs/36778634/Nebraska-Interstate-80-Rest-Areas> .

DED: Target Industries: Part I: Statewide Targets

HISTORY: Deloitte & Touche Fantus completed the inaugural Target Industry Study in December 2000 in cooperation with staff from the Nebraska Department of Economic Development (DED), and several sponsoring organizations in Nebraska. The study had a 20-year time horizon, but focused mostly on short-term objectives. There was recognition that the location needs of some industries, combined with location attributes in certain areas of the state might generate immediate opportunities. It was noted, however, that other industries require long-term attention, either because of evolving or cyclical location needs or, more likely, because of institutional and infrastructure investments needed to be more competitive in developing those industry clusters. Given the varying characteristics of the state's industries and economic geography, the consultant noted that the study should be reviewed and updated every three to five years. Aligning with the original study, this update concentrates on "traded industries", whose markets are located primarily outside of Nebraska.

For additional information query DED: Target Industries Nebraska you may also go to this website for additional information:

<http://neded.org/files/businessdevelopment/library/TargetIndStudy.pdf> .

DED: International Trade Office: International Resources

The Nebraska Department of Economic Development's Office of International Trade and Investment (OITI) works with existing businesses to expand their international marketing efforts, as well as fostering international manufacturing investments in the state. If you have any suggestions, or links you think would be useful, please contact Susan Rouch at 402-471-4668 or email her at susan.rouch@nebraska.gov

For additional information on the International Trade Office go this website:

<http://www.neded.org/business/international-trade-and-investment/international-resources> .

DED: Group Tour Marketing: Group Tour marketing is designed to help make planning and operating your tour through Nebraska as easy and profitable as possible. This program actively markets and promotes Nebraska attractions, events and visitor services, and offers familiarization tours for group travel operators and group leaders. For additional information you may contact Paula Bohaty, Development Consultant- Tourism – Eastern Region. You may also go to this website for additional information:

<http://www.visitnebraska.gov/scenic-byways> .

DED: Travel Writer's Assistance: DED's marketing staff targets those persons and groups most likely to visit Nebraska and spend money and also provides journalists, writers, photographers, and editors who will publicize Nebraska's attractions. Sarah Baker is the Media & Public Relations Coordinator Tel # 402-471-3797. For an example of the newsletter go to the website:

http://www.neded.org/files/PIO/ndn/2007/NEDEDnews07_07.pdf

DED: Community Infrastructure Grant Program: This program provides federal grants to local governments for water/wastewater projects, community facilities, and other community infrastructure projects. Merci Suarez is a Development Consultant, she is reachable at 402-471-6280. Further examples and instructions may be seen at the following website: <http://www.kimball-ne.org/EconDev/Documents/2008%20CDBG%20planning%20Application.pdf> .

DED: Leadership Development Challenge: *Program Information*

The NCIP Leadership Development Challenge consists of curriculum designed to help communities foster leadership and volunteerism. In addition to the curriculum, selected communities will receive research from the Department of Economic Development that compares and contrasts the community to similar communities. Selected communities also receive the help and support of the Department of Economic Development staff throughout the process. Department staff will attend the kick-off meetings for selected communities and will attend other meetings as requested by the selected communities in order to help the community through the curriculum. The curriculum consists of four parts: a community-based leadership module; a community analysis/planning module; case studies focused on economic development, housing, health, education, and government issues; and a capstone project that is submitted to the Department of Economic Development. Capstone projects submitted from selected communities will be evaluated for potential funding sources to implement the capstone project. DED-USDA-RCDI communities will potentially receive DEDUSDA- RCDI funds. Non-DED-USDA-RCDI communities will be provided with a list of possible funding options specific to the submitted capstone project.

For more information, please contact:

Christina Bartels
NCIP Coordinator
P.O. Box 94666
Lincoln, NE 68509-4666
402.471.3172
christina.bartels@nebraska.gov

A copy of the Nebraska leadership Development Application may be found at this website: http://www.neded.org/files/crd/2009/NCIP/NCIP_Application_2009_web.pdf .

DED: Local Option Municipal Economic Development Act (LB 840): The Act authorizes incorporated cities and villages to collect and appropriate local tax dollars (sales and/or property tax) if approved by the local voters, for economic development purposes. For information on five public works projects awarded \$1 million Community Development Block Grant funding and for a contact name and number go to this website: http://www.neded.org/index.php?option=com_content&task=view&id=691 .

DED: Marketing of Nebraska Incentive Plans: Nebraska is truly in the middle of it all, offering an array of advantages that make exploring, living, working and doing business here a wonderful and rewarding experience. Exceptional quality of life, clean air, excellent educational opportunities, vast recreation, and safe environment, as well as, unmatched work ethic, business-friendly atmosphere, and lower-overall cost of living make Nebraska a dynamic location.

Nebraska Advantages Abound

- **World class telecommunications infrastructure**
- **Business friendly regulatory atmosphere**
- **Wage credits, including teleworkers**
- **Research and development credits**
- **Available sites and buildings**
- **Low cost, reliable power**
- **Key transportation routes**
- **Unmatched work ethic**
- **Real estate tax refunds**
- **Investment tax credits**
- **Minimal congestion**
- **Speed to markets**
- **Centrally located**

For more information and assistance go the website of <http://business.neded.org/> .

DED: Affordable Housing Program: Affordable Housing Program

Are you seeking to buy or rent housing, or rehabilitate your existing home?

Are you a developer, non-profit organization, local government or housing authority searching for technical assistance and/or financing for affordable housing projects or programs?

Are you currently administering a Nebraska Affordable Housing Program grant?
Are you seeking to buy or rent housing, or rehabilitate your existing home?

DED's Nebraska Affordable Housing Program (NAHP) helps fund non-profit organizations, housing authorities and local governments, which in turn, assist people with housing needs by offering affordable rental housing, homebuyer assistance, and rehabilitation funding for owner-occupied houses.

For more information on the Affordable Housing Program go to their website at <http://www.neded.org/affordable-housing-program> .

DED: Customized Job Training: Customized Job Training

The Nebraska Department of Economic Development encourages businesses that are interested in applying for grant funds to work with their [local community college](#) in application preparation and development of their training plan.

Included in the economic development package is the Nebraska Customized Job Training Advantage that provides a flexible and discretionary custom job training program to help ensure the State's workforce is prepared in advances in rapidly changing technology and industries.

Learn more about Customized job Training by going to their website at <http://www.neded.org/business/start-a-business/financing-a-incentives/tax-incentives/customized-job-training>.

DED: Nebraska Diplomats, Inc.: Nebraska Diplomats Home

Nebraska is a great state to work, play and grow a business, and the Nebraska Diplomats exemplify this. With a membership of more than 475 business executives and community leaders, the Nebraska Diplomats Inc. is the largest economic development organization in Nebraska.

The Nebraska Diplomats form alliances with other Nebraska economic development organizations to promote the state's productive business climate and its unique quality of life.

The Nebraska Diplomats Inc. is a non-profit corporation. The Diplomats organization provides a connection to Nebraska leaders without political, organizational or geographic restrictions.

Learn more about the Nebraska Diplomats by going to the website of <http://www.neded.org/nebraska-diplomats-home>.

DED: Nebraska Micro Enterprise Development Program:

The stated purposes of the Act include [Sec. 81-1297]:

- * To better assure that micro businesses are able to realize their full potential to create jobs, enhance entrepreneurial skills and activity, and increase low-income households' capacity to become self-sufficient;
- * To facilitate the development of a permanent, statewide infrastructure of micro-lending support organizations;
- * To leverage additional non-state funds for the support of microenterprise development; and
- * To establish the Nebraska Department of Economic Development as the coordinating office for facilitating micro-lending and microenterprise development.

To learn more about the Nebraska Micro-Enterprise Development Act go to this website: <http://www.neded.org/files/businessdevelopment/microenterprise/06MicroEntAnnRep.pdf>.

DED: Nebraska Film Office: The Sixth Annual Omaha Film Festival kicks off this week with March 2-6 at the Great Escape Theatre in Omaha. For more information, go to the web site at www.omahafilmfestival.org, click on 'tickets' for more information.

The event includes a screenwriting conference with panel discussions including academy award winner Mauro Fiore, ASC "The Aviator", Shane Black "Lethal Weapon", Tom Elkins "Red Eye" and "The Haunting in Connecticut" and Ted Griffin, "Ocean's Eleven."

The OFF has become a regional event with film entries from across the country. It's a great opportunity and venue for writers, directors, producers and actors to debut their films. It's also a great opportunity for local industry professionals to meet and schmooze for the next big break! Don't miss it! There are individual tickets available or passes for the entire event. You'll be glad you did.

To learn more about the Nebraska Film Office go to this website: <http://www.neded.org/nebraska-film-office-home>.

DED: Nebraska Manufacturing Extension Partnership: To compete in today's highly demanding global economy, manufacturers are constantly pressured to cut costs, improve quality, meet environmental and international standards, and get to market faster with new and improved products.

The Nebraska Manufacturing Extension Partnership's (NMEP) sole purpose is to provide small and medium sized manufacturers with the exact tools they need to succeed in the global marketplace. The NMEP works directly with manufacturers, helping them access a national network of more than 2,000 field engineers and manufacturing specialists whose solutions can be tailor-made for each company's specific needs, ultimately leading to greater productivity, increased profits, and enhanced global competitiveness.

Learn more about Nebraska Manufacturing Extension Partnership by going to this website: <http://neded.org/business/existing-business/manufacturing-assistance> .

DED: Business Development Division: Nebraska is truly in the middle of it all, offering an array of advantages that make exploring, living, working and doing business here a wonderful and rewarding experience. Exceptional quality of life, clean air, excellent educational opportunities, vast recreation, and safe environment, as well as, unmatched work ethic, business-friendly atmosphere, and lower-overall cost of living make Nebraska a dynamic location.

Learn more about the Business Development Division by going to this website and contact the Director listed there: <http://business.neded.org/> .

DED: One Stop Business Assistance Center: The One-Stop Registration Information System has been established to help in navigating the process of setting up a new business.

This system is designed to help create your business entity by:

- Asking you pertinent questions about your business
- Identifying necessary forms to be filed with appropriate State agencies
- Providing you with help links and contacts throughout the process

It is recommended that you research your business before beginning this questionnaire, however, the links provided next to questions within the application you may also find to be helpful when deciding how to answer.

At the end of the business questionnaire a customized checklist will be created for you, that you may use to track your progress through your business' creation.

This checklist is not intended to be a complete and comprehensive list of all forms necessary to operate your business, but instead will provide you with the foundation from which to build.

Find further information on the One Stop Business Assistance Center by going to the following website: <https://www.nebraska.gov/osbr/index.cgi> .

DED: Policy and Planning Opportunities: Joseph Young is the Nebraska Legislative Coordinator. The Legislative Coordinator of DED refines and modernizes DED language and develops increased understanding and cooperation with the legislature. He may be reached at joseph.young@nebraska.gov or on 402-471-3783.

DED: Rural Community Development Initiative (RCDI): The Rural Community Development Initiative (RCDI) program provides technical assistance and training funds to qualified intermediary organizations to develop their capacity to undertake housing, community facilities, and community and economic development projects in rural areas.

Learn more about RCDI by going to this website:
<http://www.rurdev.usda.gov/rhs/rcdi/index.htm> .

DED: Rural Development Commission (RDC): Vision :
The Rural Development Commission advocates for effective development in rural Nebraska.

For more information in regard to RDC go to their website at: <http://www.neded.org/rcd-home>

DED Surety Bond Assistance: The intent of this program is to provide guidance to Nebraska businesses in their financial planning and structure. Dan Curran is the Director and he may be reached 402-471-6513 or at dan.curran@nebraska.gov .

DED: Tourism Assessment, Resource Growth, and Evaluation Team (TARGET): Tourism is Nebraska's third-largest industry. To encourage planned development and growth, the Nebraska Department of Economic Development Travel and Tourism Division offers TARGET (Tourism Assessment Resource Growth Evaluation Team) a free tourism evaluation program. The objective of TARGET is to help Nebraska's rural communities:

- Develop and market tourism potential
- Realize opportunities
- Celebrate strengths
- Improve weaknesses
- Capitalize on tourism potential

For additional information please go to this website:
http://www.neded.org/files/rdc/library/2010/RDC_2010_April.pdf .

DED: Transportation, Warehousing, Distribution, and Logistics (TWDL): The Nebraska Logistics Council operates under the umbrella of the Nebraska Trucking Association. Membership is not required to attend meetings, but your company must be a member of the Nebraska Logistics Council to vote or to hold office. For more information on membership [click here](#) or for the time and location of the next monthly meeting, please call (402) 476-7822 or email ljohnson@nebtrucking.com .

To learn more about TWDL visit this website at:
<http://business.neded.org/nlc/aboutus.htm> .

DED: Tourism Development Initiative: WHAT IS THE NEBRASKA TRAVEL & TOURISM DIVISION?

The Nebraska Travel & Tourism Division consists of 10 staff members and is one of four divisions within the Nebraska Department of Economic Development. The Division's main office is located in the state office building in Lincoln; however, two staff members reside in field offices in western Nebraska (Thedford and Sidney). The Division has two primary purposes (1) **to market and promote** Nebraska's tourism industry; and (2) **to provide educational opportunities** throughout the year to people working in the state's tourism industry.

To learn more go to: <http://industry.visitnebraska.org/pdfs/industry/Tourism101Guide.pdf>

DED: Value Added Ag Grants: is grant program supports the **collaborative** development of farming and ranching; the start-up and growth of value-added agricultural enterprises; and growth of rural communities and regions. Learn more about Value Added Ag Grants by going to: http://www.neded.org/files/rdc/grants/2009/VAA_app_09_Sept.doc .

Department of Environmental Quality: The Nebraska Department of Environmental Quality was created pursuant to passage of the Nebraska Environmental Protection Act in 1971. Although the Department has grown and been given additional responsibilities over the years, its ongoing mission has remained the same - the protection of Nebraska's air, land and water resources. Presently, the Agency is authorized a staffing level of 218 full-time employees.

Learn more about the Department of Environmental Quality by going to:
<http://www.ndeq.state.ne.us/> .

Department of Health and Human Services Office of Rural Health (HHS): The mission of the Nebraska Office of Rural Health is to define and promote the development of a health care system that assures the availability and accessibility of quality health care services to meet the needs of people living in rural Nebraska.

Learn more about HHS by going to: <http://www.hhs.state.ne.us/orh/> .

Nebraska Educational Telecommunications (NET): As one of our state's most trusted and unifying institutions, NET will:

- Promote civic engagement.
- Enhance the educational environment.
- Deliver anytime/anywhere access to quality content and services.
- Foster partnerships that advance our mission.
- Empower Nebraskans to make informed decisions by serving as an independent source of information.
- Enable Nebraskans to learn, grow, connect, and contribute, improving the quality of life in our state.

To learn more about NET go to <http://www.netnebraska.org/about/mission.html> .

Nebraska Ethanol Board (NEB): The Nebraska Ethanol Board is a state agency, created in 1971 by the Nebraska Legislature—the first state agency in the United States devoted solely to the development of the ethanol industry. The Nebraska Ethanol Board is made up of seven members appointed by the Governor, and one non-voting technical advisor.

For more information regarding NEB go to: <http://www.ne-ethanol.org/about/about.htm>

Nebraska Information Technology Commission (NITC): "The mission of the Nebraska Information Technology Commission is to make the State of Nebraska's information technology infrastructure more accessible and responsive to the needs of its citizens, regardless of location, while making investments in government, education, health care and other services more efficient and cost effective."

To learn more about NITC go to: <http://www.nitc.ne.gov/nitc/about.html>

Federal Based Programs

Small Business Administration (SBA) Nebraska District Office: Although SBA has grown and evolved in the years since it was established in 1953, the bottom line mission remains the same. The SBA helps Americans start, build and grow businesses. Through an extensive network of field offices and partnerships with public and private organizations, SBA delivers its services to people throughout the United States, Puerto Rico, the U. S. Virgin Islands and Guam.

To learn more about the SBA go to: <http://www.sba.gov/content/mission-statement-0> .

USDA Rural Development:

The Nebraska Staff of USDA Rural Development is committed to assisting Nebraskans in accessing USDA financing programs that are designed to offer:

- **Affordable homeownership and repair opportunities.**
- **Safe and modern rental housing facilities.**
- **Essential public facilities and services including:**
 - ◆ Water and sewer systems
 - ◆ Community facilities
 - ◆ Telecommunications equipment and facilities
- **Business opportunities to build and sustain healthy economies.**
- **Financial and technical assistance to cooperative and value-added efforts across Nebraska.**
- **Energy opportunities for conservation, installation of renewable energy systems, and research & demonstration on biofuels and advanced biofuels.**

Learn more about USDA Rural Development by going to:
<http://www.rurdev.usda.gov/NE/index.htm> .

USDA: Business and Industry Loan Guarantees: The Purpose Of The Business And Industry (B&I) Loan Guarantee Program Is...To provide loan guarantees for business and industrial development to create and maintain employment, expand, and to improve economic climate.

For more information on these loan guarantees go to:
http://www.rurdev.usda.gov/NE/business&industry_guaranteed_loan_program.htm .

USDA: Community Facilities Loans (direct or guarantee) and Grants: USDA Rural Development is committed to improving the quality of life for rural Americans. Through its Community Facilities Loan and Grant programs, USDA Rural Development provides for essential community facilities such as day care centers, fire stations, senior centers, medical clinics, and many other types of community facilities.

For more information regarding Community Facilities Loans and Grants go to their website at: http://www.rurdev.usda.gov/NE/cf_programs_index.htm .

USDA: Cooperative Services: USDA Rural Development Cooperative programs preserve and improve the cooperative business system of rural areas. The direct role of the Cooperative programs is to provide knowledge to improve the effectiveness and performance of rural cooperative businesses. Cooperative programs assist rural residents in forming new cooperative businesses and improve the operations of existing cooperatives by providing technical assistance, conducting cooperative-related research, and producing information products to promote public understanding of cooperatives.

To learn more about this service go to their website at:

http://www.rurdev.usda.gov/NE/cooperative_services_programs_index.htm .

USDA: Direct Farm Labor Housing Loans and Grants: The Purpose Of The Direct Farm Labor Housing Loan And Grant Program Is...To provide financing to develop rental housing and related facilities for domestic farm laborers.

To learn more about this service go to their website at:

http://www.rurdev.usda.gov/NE/direct_farm_labor_housing_loanandgrant_program.htm .

USDA: Direct Home Ownership Loans: The Purpose Of The Direct Home Ownership Loan Program Is...To provide loans in rural areas that assist very-low and low-income applicants to purchase, construct, repair or rehabilitate, or relocate a single family home. For manufactured housing, only new construction is permitted.

To learn more about this service go to their website at:

http://www.rurdev.usda.gov/NE/direct_homeownership_loan_program.htm .

USDA: Energy Efficiency Improvements and Renewable Energy Systems Loan Guarantees:

Rural Development makes loan guarantees, and grants to farmers and ranchers (agricultural producers) or rural small businesses to purchase renewable energy systems and make energy efficiency improvements. The Farm Security and Rural Investment Act of 2002 (2002 Act) established the Renewable Energy Systems and Energy Efficiency Improvements Program under Title IX, Section 9006. This program will help farmers, ranchers, and rural small businesses to reduce energy costs and consumption.

To learn more about this program go to their website at:

http://www.rurdev.usda.gov/NE/energy_index.htm .

USDA: Distance Learning and Telemedicine Loans and Grants: The Purpose Of The Distance Learning And Telemedicine Program Is...To provide for technology equipment and facilities to link rural schools within regions, link schools to other educational institutions, utilize rural libraries as distance learning centers, link rural hospitals and medical clinics to major medical centers, and to provide interactive video and distance rural health training.

To learn more about this service go to their website at:
http://www.rurdev.usda.gov/NE/distance_learning_and_telemedicine_program.htm .

USDA: Guaranteed Home Ownership Loans (available only through approved lenders): The Purpose Of The Guaranteed Home Ownership Loan Program Is...to provide loans in rural areas that assist moderate to low income applicants to purchase, construct, repair or rehabilitate, or relocate a single family home. For manufactured housing, only new construction is permitted. Loans are made by local approved lenders, ([participating mortgage lenders](#)), with USDA Rural Development issuing a guarantee on the loan. Funds for repairs can only be included with the purchase of an existing home.

To learn more about this program go to their website at:
http://www.rurdev.usda.gov/NE/guaranteed_home_ownership_loan_program.htm .

USDA: Guaranteed Rural Rental Housing Loans:

The Purpose Of The Guaranteed Rural Rental Housing Program Is... To construct new or purchase an existing building(s) with rehabilitation as outlined in agency regulations or rehabilitation and revitalization of existing Section 515 Rural Development financed properties.
--

Qualified lenders are authorized to originate, underwrite and close loans to eligible applicants to construct new multi-family housing complexes in rural areas. Lenders may also make loans for the purchase of an existing rural property where rehabilitation of at least \$6,500 per unit is needed. The Rural Housing Service guarantee to the lender will be limited to 90 percent.

To learn more about this program go to their website at:
http://www.rurdev.usda.gov/NE/guaranteed_rural_rental_housing_program.htm .

USDA: Housing Preservation Grants: The Purpose Of The Housing Preservation Grant Program Is...To provide qualified recipient organizations (grantees) with funds to develop programs to assist very-low and low income rural homeowners with repairs or rehabilitation work to their homes. Also, funds are provided to rental property owners and co-ops to help with repairs and rehabilitation of their units if units are made available to low and very-low income persons.

To learn more about this program go to their website at:
http://www.rurdev.usda.gov/NE/housing_preservation_grant_program.htm .

USDA: Intermediary Relending Program: The Purpose Of The Intermediary Relending Program (IRP) Is...To provide intermediary loans to ultimate recipients for community development projects, establishment and expansion of businesses and creation and/or saving of jobs.

To learn more about this program go to their website at:
http://www.rurdev.usda.gov/NE/intermediary_relending_program.htm .

Resource Conservation and Development Areas (RC&D): The purpose of the Resource Conservation and Development (RC&D) program is to accelerate the conservation, development and utilization of natural resources, improve the general level of economic activity, and to enhance the environment and standard of living in designated RC&D areas. It improves the capability of State, tribal and local units of government and local nonprofit organizations in rural areas to plan, develop and carry out programs for resource conservation and development. The program also establishes or improves coordination systems in rural areas. Current program objectives focus on improvement of quality of life achieved through natural resources conservation and community development which leads to sustainable communities, prudent use (development), and the management and conservation of natural resources. RC&D areas are locally sponsored areas designated by the Secretary of Agriculture for RC&D technical and financial assistance program funds.

To learn more about RC&D go to their website at:
http://www.ne.nrcs.usda.gov/partnerships/rcd/index_rcd.html .

USDA: Rural Business Enterprise Grants: The Purpose Of The Rural Business Enterprise Grant (RBEG) Program Is...To provide grants that facilitate and finance the development of small and emerging private business enterprises in rural areas through establishing small business revolving loan funds, acquisition of land, buildings, and infrastructure to enhance business development or by providing technical assistance, etc.

To learn more about this program go to their website at:
http://www.rurdev.usda.gov/NE/rural_business_enterprise_grant_program.htm .

USDA: Rural Business Opportunity Grants: The Purpose Of The Rural Business Opportunity Grant (RBOG) Program Is...To provide grants for technical assistance for business development and to conduct economic planning in rural areas. Funds may be used to develop project feasibility studies, technical assistance, or for business and economic development, planning and training.

To learn more about this program go to their website at:
http://www.rurdev.usda.gov/NE/rural_business_opportunity_grant_program.htm .

USDA: Rural Community Development Initiative: The Purpose Of The Rural Community Development Initiative Is...To help private, not-for-profit, community-based organizations and low-income communities improve rural economic development, housing, and community facilities in rural areas.

To learn more about this program go to their website at:
<http://www.rurdev.usda.gov/NE/RCDI.htm> .

USDA: Rural Cooperative Development Grants (RCDG): The Purpose Of The Rural Cooperative Development Grant (RCDG)Program Is...To establish and operate centers for rural technology or cooperative development to promote: the development of the economic condition of rural areas through technological innovation, cooperative development, and adaptation of existing technology; the commercialization of new services and products that can be produced or provided in rural areas; new processes that can be utilized in the production of products in rural areas; and new enterprises or cooperatives that can add value to on-farm production through processing or marketing. NOTE: This grant differs from the Valued-Added Producer Grants available to for-profit businesses looking at value-added projects.

To learn more about (RCDG) go to their website at:
http://www.rurdev.usda.gov/NE/rural_cooperative_development_grant_program.htm .

USDA: Rural Economic Development Loans & Grants:

The Purpose Of The Rural Economic Development Loan And Grant Program (REDLG) Is...To provide for a wide range of rural economic development and job creation projects that will improve the economic condition of rural areas. Loans and grants are made to USDA Rural Development electric and telephone program borrowers who use the funds to provide financing for business and community development projects. Projects may include: business expansion and start-up, community development, business incubator, medical, training and technology projects, revolving loan funds, etc.

Grants are provided to...utility cooperatives to support economic development.

To learn more about this program go to their website at:
http://www.rurdev.usda.gov/NE/rural_economic_development_loan_and_grant_program.htm .

USDA: Rural Housing Site Loans:

The Purpose Of The Rural Housing Site Loan Program Is...To purchase land and develop sites, including the construction of essential streets, utility lines etc., which will be sold on a non-profit basis to very-low, low and moderate-income households.

To learn more about this program go to their website at:
http://www.rurdev.usda.gov/NE/rural_housing_site_loan_program.htm .

USDA: Rural Rental Assistance: The Rural Rental Assistance (RA) program provides an additional source of support for households with incomes too low to pay the HCFP subsidized (basic) rent from their own resources. HCFP pays the owner of a multi-family housing complex the difference between the tenant's contribution (30 percent of adjusted income) and the monthly rental rate.

To learn more about Rural rental Assistance go to their website at:
http://www.rurdev.usda.gov/rhs/mfh/brief_mfh_rra.htm .

USDA: Rural Rental Housing Loans: The Purpose Of The Rural Rental Housing Loan Program Is...To provide financing to eligible applicants and entities for new construction or acquisition with rehabilitation of existing buildings into new rental housing projects.

Learn more about this program by going to their website at:
http://www.rurdev.usda.gov/NE/rural_rental_housing_loan_program.htm .

USDA: Solid Waste Management Grants: The Purpose Of The Solid Waste Management Grant Program Is...To provide technical assistance and training to reduce or eliminate pollution of water resources in rural areas and improve planning and management of solid waste sites in rural areas.

Technical Assistance And Training Grants provide technical assistance and training on identifying and evaluating solutions to water and wastewater problems of associations in rural areas relating to water source, storage, treatment or distribution and waste collection, treatment and disposal. The [Nebraska Rural Water Association](#) currently has technical assistance available to rural Nebraska communities.

Learn more about this program by going to their website at:
http://www.rurdev.usda.gov/NE/solid_waste_management_grant_program.htm .

USDA: Technical Assistance for Self-Help Housing: The Purpose Of The Technical Assistance For Self-Help Housing Program Is...To provide grant funds to eligible entities to finance programs of technical and supervisory assistance for the development of mutual self-help housing.

Mutual Self-Help Housing is a construction method by which participants organized in groups of 6-10 families and/or individuals, utilize their own labor to reduce the total construction costs of their homes. Construction work is completed on homes by an exchange of labor with one another. Financing for the materials and skilled labor which needs to be hired is generally provided through the agency's Direct Home Ownership Loan program.

Learn more about this program by going to their website at:
http://www.rurdev.usda.gov/NE/technical_assistance_for_self_help_housing_program.htm .

USDA: Value-Added Producer Grants: The Purpose Of The Value-Added Producer Grant Program Is...To help producers (farmers) expand their customer base for the products or commodities that they produce. This results in a greater portion of the revenues derived from the value-added activity being made available to the producer of the product.

For additional information on this program go to their website at:http://www.rurdev.usda.gov/NE/value_added_producer_grant_program.htm .

USDA: Water and Waste Disposal Loans and Grants: The Purpose of The Water and Waste Disposal Loan And Grant Program Is...To develop and repair drinking water and sanitary sewer systems, including solid waste disposal and storm drainage in rural areas. Funding covers water and waste development costs such as construction, improvements, equipment, facilities, land rights, engineering, fees, etc.

For additional information on this program go to their website at:http://www.rurdev.usda.gov/NE/water&waste_disposal_program.htm .

Private, Not-for-Profit Programs

AIM Institute: It is the AIM Institute's mission to empower communities, organizations, and individuals through information technology. To learn more about the AIM Institute go to their website at: <http://www.aiminstitute.org> .

Aquila-Economic Development: Black Hills Energy's economic development professionals serve as "information brokers" on sources of financing, real estate, work force training, and incentives as well as a resource in cutting red tape relating to business expansions.

For Your Community Our team of economic development experts can assist communities with infrastructure planning, feasibility studies, target marketing and other initiatives leading to winning project proposals.

For additional information this company go to their website at: <http://economicdevelopment.blackhillsenergy.com> .

Center for Rural Affairs (CFRA): Mission Statement Establish strong rural communities, social and economic justice, environmental stewardship, and genuine opportunity for all while engaging people in decisions that affect the quality of their lives and the future of their communities.

To obtain more information on CFRA go to their website at: <http://www.cfra.org> .

Center for Rural Affairs – Rural Enterprise Assistance Project (REAP): Call on REAP when you are thinking of starting a small business or if you already operate a small business in Nebraska.

Through REAP you can create a business plan, research potential markets and marketing ideas, discuss management issues with experienced business specialists, and apply for a small business loan.

Started in 1990, REAP has provided business development services to over 10,000 micro businesses. (A micro business is defined as one with 5 or fewer employees.)

REAP has placed over \$6.2 million in loans and leveraged nearly \$13 million in additional funds from other sources due to our assistance.

For additional information pertaining to REAP go their website at:

<http://www.cfra.org/reap/home> .

RUPRI Center for Rural Entrepreneurship (RUPRI=Rural Policy Research Institute): The Center’s mission is to be the national, value-added resource for rural communities and regions, and their states, interested in building more sustainable economic development frameworks around entrepreneurship.

To learn more about RUPRI go to their website at:

<http://www.energizingentrepreneurs.org> .

Gateway Development Corporation: Founded in 1989, Gateway Development Corporation was organized to help Washington County grow through recruitment and development of commercial and industrial enterprises. Gateway is a non-profit investor based organization that is a cooperative partnership between the county’s public and private sectors.

In 2002, Gateway formed a partnership with the Greater Omaha Chamber of Commerce to work alongside the economic development staff of both the Chamber and Sarpy County Economic Development Corporation (SCEDC) to form a seamless regionalized economic development effort.

Additional information pertaining to the Gateway Development Corporation may be found by going to their website at: <http://www.blairchamber.org> .

Heartland Center for Leadership: The Heartland Center for Leadership Development is an independent, nonprofit organization developing local leadership that responds to the challenges of the future. The Center's work focuses on four core areas:

- **Research and Evaluation of small towns and rural communities.** Past projects have included on-site participation evaluations of the Center's workshops to year-long evaluations of the impacts of a major foundation-funded initiative.
- **Training through interactive workshops and webinars.** Training opportunities range from one-hour keynote presentations at international conferences to several-day learning experiences.
- **Facilitation of community planning processes.** Facilitation opportunities range from half-day retreats for a Board of Directors group to several-week strategic planning sessions for small towns and rural communities.
- **Compiling Information into useful and practical publications for widespread use.**

The homepage for Heartland Center for Leadership is found at:

<http://www.heartlandcenter.info/> .

Heritage Nebraska: The National Trust for Historic Preservation's Main Street program is 30 years old. Nebraska Main Street is heading into its 16th year. The National Trust for Historic Preservation has been around since 1949. Heritage Nebraska | Preservation was formed in 2008. These pages reflect the combined experience and technical expertise developed by the national organization and the state programs. Consider this to be your resource guide as you begin your quest to help your downtown or preserve your old house or your neighborhood or your heritage. Don't hesitate to call us for further help.

To learn more about Heritage Nebraska go to their website at: <http://www.heritagenebraska.org> .

Invest Nebraska Corporation: Invest Nebraska promotes capital formation for, and provides operating assistance to, high impact entrepreneurs and investors in Nebraska. We celebrate the rich entrepreneurial spirit in our rural and urban areas. Together with the state's many entrepreneurs, we strive to make Nebraska a center for entrepreneurship and innovation.

Invest Nebraska Corporation is operated exclusively for educational and charitable purposes. Such purposes include combating community deterioration and reducing the burden of government, by developing and maintaining programs and activities directed at encouraging the development, expansion, and growth of small business in order to provide enhanced employment opportunities in areas that have experienced economic decline and community deterioration.

Learn more about Invest Nebraska Corporation by going to their website at:

<http://www.investnebraska.com> .

Institute for Sustainable Communities: The mission of the Joslyn Institute for Sustainable Communities is to promote an integrated approach to sustainability through education, public visioning, partnership, and coordination.

To learn more about the Institute for Sustainable Communities go to their website at: <http://www.ecospheres.com/>.

LandLink: Land Link helps beginning farmers and ranchers gain access to the land, financing, knowledge and skills that they need to make a successful start. Land Link matches retiring farmers with beginning farmers and others who desire to farm or ranch.

To learn more about this program go to their website at: http://www.cfra.org/resources/beginning_farmer.

Nebraska Community Foundation: The Nebraska Community Foundation (NCF) partners with community leaders to inspire charitable giving, prudently manage financial resources and make strategic investments for the prosperity of our people and our communities.

Learn more about the Nebraska Community Foundation by going to their website at: <http://nebcommfound.org/>.

Nebraska Enterprise Fund (NEF): The Nebraska Enterprise Fund is a statewide financial intermediary dedicated to supporting microenterprise practitioners. In 1997 the Nebraska Microenterprise Partnership Fund became incorporated as a 501(c)(3) and became a certified Community Development Financial Institution (CDFI) in 1998. In 2008, the Partnership Fund name was changed to Nebraska Enterprise Fund.

Please go to their website at: <http://www.nebbiz.org/> to learn more about this program.

NMPP Energy (umbrella for NMPP_MEAN_PACE_NPGA_Essent Services, Inc.): NMPP Energy is a nonprofit, member-owned organization providing electricity, natural gas and utility related services to nearly 200 member communities across six Midwestern and mountain states. NMPP Energy promotes the benefits of joint action and local utility control among its member communities. NMPP Energy consists of four entities:

- **Nebraska Municipal Power Pool (NMPP)**
Utility-related services
- **Municipal Energy Agency of Nebraska (MEAN)**
Wholesale electric supply
- **National Public Gas Agency (NPGA®)**
Wholesale natural gas supply
- **Public Alliance for Community Energy (ACE)**
Retail natural gas choice

To learn more about NMPP Energy go to their website at: <http://www.nmppenergy.org> .

Nebraska Public Power District Economic Development Team (NPPD): NPPD's Economic Development Team partners with NPPD's retail division and wholesale customers concentrating on positioning communities and regions for economic growth, assisting with the expansion and retention of existing industry, and/or attracting new business.

To learn more about (NPPD) Economic Development team go to their website at: http://www.nppd.com/Economic_Development/ .

Nebraska Information Network (NIN): NIN's principal mission is to assist members in providing world class communication services for Nebraska's Business, Government, Education, Health Care, and Consumer markets

NOTES: Nebraska Information Network's membership is made up of most of Nebraska's 37 local telephone carriers. Membership is open to all Local Incumbent Telephone Companies (ILECs) in Nebraska who serve significant numbers of rural customers through the operation of telephone exchanges (switches) in rural communities.

To learn more about NIN go to their website at: <http://www.nin-telcom.com> .

Omaha Public Power District Economic Development (OPPD): Omaha Public Power District's Economic Development team assists communities with economic development in a number of areas, including business recruitment, retention and expansion, industrial site evaluation, marketing, and strategic planning. Our partnership can provide guidance in creating a realistic vision for your community while offering motivation to identify resources and complete projects.

To learn more about Omaha Public power District Economic Development program go to their website

at:http://www.oppd.com/BusinessCustomers/ProductsServices/EconomicDevelopment/2_000979 .

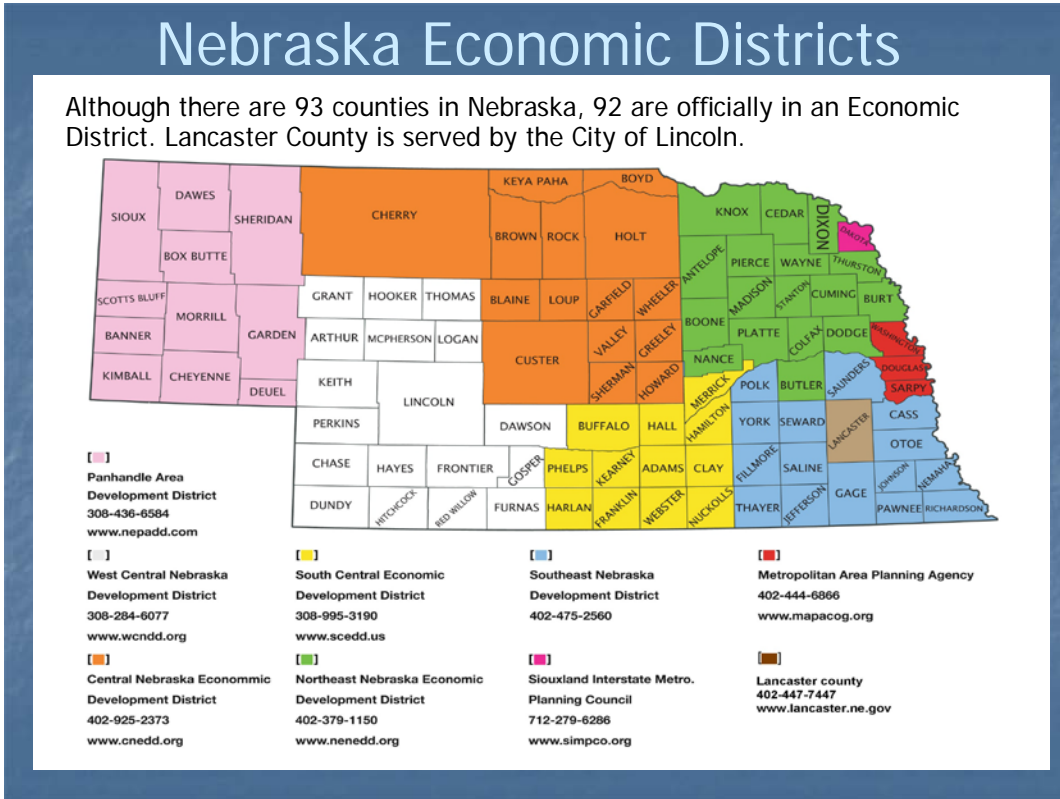
Project Hope (Hope and Opportunity for People and the Environment): Small businss development presents a potent strategy to combat poverty. Seventy percent of the job growth in Nebraska's farm and ranch counties over the last decade was in non-farm self-employment. Project Hope strives to foster rural entrepreneurship.

To learn more about these programs go to their website at:

<http://www.cfra.org/issues/entrepreneurship.htm> .

Community, County and Regional Economic Development Organizations

Map of Nebraska Economic Districts



Atkinson Development Corporation: The Development Corporation's objective is to help existing and new businesses with working capital or startup costs. For more information, contact the President of the Development Corporation, contact Mike Butterfield (402) 925-2801.

For more information about the Atkinson Development Corporation, go to their website at: <http://atkinsonne.com/ecodev.html> .

Auburn Nebraska Economic Development: Auburn is offering an aggressive retail business recruitment program with meaningful assistance to new or expanding business.

Auburn offers:

- Site location assistance.
- Community information.
- Economic development data.
- A trade territory extending into four states: Southeast Nebraska, Southwest Iowa, Northeast Missouri and Northeast Kansas.
- Major highway cross roads (with active highway construction program in area).
- Top quality of life.
- Solid economic base.
- Quality financial services available (local and regional bank branches).
- Existing downtown, mall and highway strip business locations available.
- Many sites available for building.
- Nemaha County Small Business Development Association (REAP) offers business training, small startup loans, and continuing assistance to fledgling home-based or small retail-front businesses.

The **Auburn Development Committee** provides prospect-ready sites and information. A committee comprised of Auburn's business and community leaders. Contact **Auburn City Hall** , (402) 274-3420

To learn more about Auburn Economic Development go to their web site at:

<http://www.auburnneb.com/econDev.html> .

Aurora Area Chamber & Development Corporation (AACD): AACD is a progressive, nonprofit organization representing the Aurora Chamber of Commerce, the Aurora Development Corporation, the Aurora Technology Center, the Aurora Housing Development Corporation, Aurora Construction Enterprises, Aurora Childcare, the City of Aurora and Hamilton County.

AACD's members, people from all walks of life, work together to build a better community. The organization unites businesses, the professions, industry and individuals.

AACD is people, just like you

To learn more about AACD go to their website at:

<http://www.auroranebraska.com/index.php/about-the-aacd> .

Bassett Community Development Agency: To learn about the economic development program at Bassett go to their website at:

http://bassettnebr.com/economic_development.asp .

Boone County Development Agency: The Boone County Development Agency (BCDA) was formed under an inter-local agreement. We are made up of representatives from each community in the county.

Areas of interest to us are Business Attraction, Retention, and Expansion; Housing; Youth Retention; and Tourism. We strive to create opportunities that make Boone County a wonderful place to live, work, and raise a family.

To learn more about the Boone County Development Agency go to their website at: <http://www.boone-county.org/>

Box Butte Development Corporation (BBDC): Box Butte Development Corporation was formed in 1986 by a group of forward-thinking, proactive community leaders. The founding fathers of BBDC were concerned the two driving forces of Box Butte county's economy, agriculture and the railroad, both could have cyclical natures and these tandem negative cycles could have far-reaching effects on the county. Thus, the intent of an economic development organization was to try to diversify businesses to mitigate dual adverse circumstance in the two most important economic engines of the economy.

To learn more about BBDC go to their website at: <http://www.boxbuttedevelopment.com>

Buffalo County Economic Development Council: The Buffalo County Economic Development Council was formed in 1986 and has worked closely with city, county and state leaders to make Kearney & Buffalo County more attractive to businesses for 22 years. A non-profit corporation that supports and promotes responsible and sustainable economic development, the Council's board and staff are comprised of a diverse group of management and business professionals.

To learn more about the Buffalo County Development Council go to their website at: <http://www.ci.kearney.ne.us> .

Burt County Economic Development Corporation (BCEDC): Burt County Economic Development Corporation was formed in 2005 as a nonprofit economic development organization. The governments of Burt County, Tekamah, Oakland and Lyons invested to develop a professional office to coordinate all economic development activities for the county. Private businesses also contribute to these efforts.

BCEDC works with both prospective and existing businesses to stimulate new jobs and capital investment to the county. Housing, leadership development and tourism are also areas that BCEDC concentrates.

To learn more about BCEDC go to their website at: <http://www.burtcoedc.com/> .

Burwell Economic Development Program: The mission of the Burwell Economic Development Board is to promote economic growth by retaining, growing, and expanding businesses in the Burwell area.

To learn more about the Burwell Economic Development Program go to their website at: http://www.burwellnebraska.net/burwell_economic_development.htm .

Butler County Development: The Butler County Development mission is to foster quality economic growth in Butler County. The primary goals of Butler County Development are to improve the quality of life in the communities and the rural areas served, to expand local businesses and industry, to create and/or attract new business and industry, and to develop plans to upgrade infrastructure within the county.

To learn more about Butler County Development contact Keith Marvin, Executive Director, 457 D St., David City, NE. 68632 : k_marvin2000@yahoo.com .

Central Nebraska Economic Development District (CNEDD): The Central Nebraska Economic Development District (CNEDD) is a 15-county regional development organization that encourages cooperation between local government officials, community-based organizations and the private sector. The District provides the link between federal and state programs, and the local level where development actually occurs.

CNEDD serves the following counties in Central Nebraska: Blaine, Boyd, Brown, Cherry, Custer, Garfield, Greeley, Holt, Howard, Keya Paha, Loup, Rock, Sherman, Valley and Wheeler.

To learn more about CNEDD go to their website at: <http://www.cnedd.org/> .

City of David City Economic Development (Butler County Development): The objectives of the reuse fund are to provide financing for start-up and existing business to attract new business to the area and to create and retain jobs for low to moderate income persons.

To learn more about this plan go to their website at: <http://www.davidcityne.com/econdev.asp> .

City of Imperial Economic Development: Imperial encourages the expansion of its existing businesses as well as the development of additional services needed to serve both our community and Chase County. Imperial's locally controlled business development and expansion incentives include an Economic Development Loan Program, Tax Increment Financing and a Community Development Block Grant Revolving Loan Fund. Additional information may be viewed online at the [Economic Development Website](#) .

To learn more about Imperial Economic Development go to their website at: <http://www.imperialed.com> . Also click on the link to city of Imperial for additional information.

City of Kimball Economic Development: Mission - To enhance and strengthen the local economy through the support and expansion of local businesses and the attraction of new businesses. To learn more about Kimball's Economic Development Plan go to their website at: <http://www.kimball-ne.org/> .

City of Laurel Economic Development: The mission of the Laurel Economic Development Advisory Committee is to enhance the quality of life and improve business and industry in the Laurel community and area.

Learn more about Laurel's Economic Development by going to their website at: <http://www.laurelne.com/econ.asp> .

City of South Sioux City Community Development Agency (City of South Sioux City CDA): Mission

The Community Development Agency of the City of South Sioux City facilitates retention, expansion, and attraction of desirable business and industry to South Sioux City to:

- Create new and meaningful employment opportunities,
- Sustain and increase the sales tax base,
- Diversify the city's economic base
- Increase economic development resources available to businesses, and
- Facilitate housing development in South Sioux City

To learn more about South Sioux City's Community Development Agency go to their website at: <http://www.southsiouxcity.org/department/index.asp?fDD=7-0> .

City of Tecumseh Economic Development: The Tecumseh Economic Development Committee has aided in the development of new and expanded business programs that target the creation of new jobs and business investment within the City of Tecumseh. In the past five years, this program has proven successful in the creation of over 60 new jobs and 8 new businesses.

To learn more about Tecumseh Economic Development go to their website at: <http://www.tecumsehne.com/economic-development.html> .

Cozad Development Corporation (CDC): The Dawson County Area Economic Development Council, City of Cozad, Cozad Board of Public Works, Cozad Chamber of Commerce and the Cozad Development Corporation work together with the city for industrial development in the Cozad area.

These professional economic development groups are available to assist new and existing businesses in the area. All contacts are treated confidentially.

For more information on CDC go to their website at <http://www.cozadnebraska.net/econ.asp> .

Dawson Area Development: **Dawson County Area** offers the quality of life found in small towns coupled with an area labor population of close to 130,000. This has allowed us to utilize our deep roots in agriculture and livestock production to diversify our economy to include retail, wholesale distribution, trucking, manufacturing, and several agriculture related industries. Dawson County Communities are committed to progress and working cooperatively to provide strong community infrastructure, winning economic development incentives and superior quality of life features. Our central location along Interstate 80 and the 100th meridian places us right in the center of the United States. [Dawson County](#) residents have a strong work ethic, coupled with a powerful vision for the future. We are a place you will be glad to visit and call home.

Learn more about Dawson Area Development by going to their website at: <http://www.dawsonareadevelopment.com> .

North Platte Chamber of Commerce and Development Corporation: The North Platte Area Chamber of Commerce & Development Corporation is a private, non-profit organization of businesses and professional people dedicated to improving the economic and civic environment of our area and fostering the growth and prosperity of business. Our strength is in our members whom you will see highlighted within the pages of this website. These businesses and individuals create a pool of resources that are able to be combined together to solve problems and create opportunities within our community and area.

Our organization was formed on April 1, 2008, when the North Platte Area Chamber of Commerce and the Development Corporation of North Platte (DEVCO) merged together. The Chamber and DEVCO were two successful organizations doing things to improve and develop our community. After much thought and consideration on behalf of both Boards of Directors, it was determined that these two quality organizations could do even more working together as one. One organization working toward a common purpose and common goals, the most important of which is "what is best for North Platte and Lincoln County".

Learn more about North Platte Chamber of Commerce and Development Corporation by going to their website at <http://www.nparea.com/> .

Elkhorn Valley Economic Development Council (EVEDC): The Elkhorn Valley Economic Development Council Office is here to assist your company with its next business expansion including site and building selection, grant and tax incentives, labor force statistics and other community information. Centered on the hub city of Norfolk, the Elkhorn Valley region offers unique Nebraska economic development opportunities through a collaboration of local governments, education, business leadership and technological resources that are organized and dedicated to the success of business.

We are committed to bringing new growth and opportunities to the Elkhorn Valley. We hope this website will provide a wealth of information to assist not only existing area businesses and residents, but outside investors and individuals looking to relocate to our quaint, yet progressive, region. We look forward to doing business with you.

Learn more about EVEDC by going to their website at <http://elkhornedc.com> .

Fillmore County Development Corporation (FCDC): Established in June of 1989, the **Fillmore County Development Corporation (FCDC)** is a non-profit corporation that fosters economic development within the county and local communities. In addition to recruiting new industries to locate in Fillmore County, the Corporation also works with retention and expansion of existing businesses and industries. The FCDC is also one of the county's lead organization on issues such as transportation, leadership, housing, and tourism.

To learn more about FCDC go to their website at:

<http://www.fillmorecountydevelopment.org/> .

Furnace-Harlan Partnership: **Furnas/Harlan Partnership** is an economic development partnership, working to ensure the future of our region. The Partnership is striving to build a unified vision for economic development in Furnas & Harlan counties. Furnas/Harlan Partnership started as a vision of the Manager and Board of Directors of Twin Valleys Public Power District in Cambridge joined by the Southwest Nebraska RC&D in Cambridge and Trail Blazers RC&D in Red Cloud as well as the Nebraska Department of Economic Development. Inter-local Agreements were signed in December 2003 by 12 public entities in the two counties. The group contracted with a part-time coordinator/director in October 2005.

To learn more about the Furnace-Harlan Partnership go to their website at:

http://www.partnersforruralamerica.org/_power_point/north_central/Small%20Business/Neb%20-%20ROSIE.pdf .

City of Beatrice Economic Development:

Economic Restructuring - Main Street Beatrice

The Economic Restructuring Committee works on strengthening the existing economic base of the Main Street area while diversifying it. Activities include assisting existing businesses sustain and expand, recruiting new businesses, helping convert unused space into productive property, and supporting healthy competitiveness of Main Street Merchants.

The current focus is on maintaining a database of property owners, acting as a liaison between potential tenants and the people who represent property owners, and helping expedite negotiation processes. The Committee is focused on finding a unique variety of businesses to keep our Main Street District area competitive. The Committee has initiated financial incentives to support new district business owners succeed, and the Committee is focused on assisting prospective district business owners relocate and develop sustainable business plans

To learn more about City of Beatrice Economic Development go to their website at

<http://www.mainstreetbeatrice.org/page.do?acid=37&aid=149> .

Gateway Development Corporation: Founded in 1989, Gateway Development Corporation was organized to help Washington County grow through recruitment and development of commercial and industrial enterprises. Gateway is a nonprofit investor based organization that is a cooperative partnership between the county's public and private sectors.

In 2002, Gateway formed a partnership with the Greater Omaha Chamber to work alongside the economic development staff of the Chamber, Sarpy County Economic Development Corporation and Cass County Nebraska Economic Development Council to form a seamless regionalized economic development effort.

For additional information about Gateway Development Corporation visit this website: <http://www.selectgreateromaha.com/Gateway-Development-Corporation-default.aspx> .

Grand Island Area Economic Development Corporation (GIAEDC): Grand Island is a focal point of opportunity for both business and industry. The sole purpose of the Economic Development Corporation is the creation, retention, and expansion of jobs in Grand Island. We have the land and the infrastructure, a multitude of transportation avenues, an industrious workforce, government relationships that expedite development, and a quality of life community that ensures an efficient and effective venture for your business.

To learn more about GIAEDC go to their website at: <http://www.grandisland.org/> .

Greater Fremont Economic Development Council (GFDC): Fremont invites you to explore opportunities in Fremont or Dodge County. The Greater Fremont Development Council would be happy to assist your business development efforts.

Learn more about by visiting their website at: <http://www.gfdc.net> .

Greater Wahoo Development Foundation: The Greater Wahoo Development Foundation is organized as a non-profit corporation whose mission is to assist in promoting the economic growth and development of the City of Wahoo; to encourage immigration, new industries, and investment, and to conduct and carry on a public campaign exploiting and advertising the various resources of the City of Wahoo.

To learn more about the Greater Wahoo Development Foundation go to their website at: http://www.wahoo.ne.us/content_subcat.asp?SubCategoryID=82&CategoryID=135&ContentID=70 .

Hastings Economic Development Corporation's (HEDC): Welcome to the Hastings Economic Development Corporation's website, a resource to help provide comprehensive and up-to-date information on the Hastings Nebraska business environment.

To learn more about HEDC go to their website at: <http://www.hastingsedc.com/> .

High Plains Community Development Corporation (High Plains CDC): Welcome to High Plains CDC. Since January of 1995 we've stood for the creation of opportunity and equity for the rural communities of northwest Nebraska. We're for sustainable change and for insuring quality, safe, affordable housing for all. We accomplish this by building and substantially rehabilitating homes for low-moderate income homeownership. We provide outreach and education on the Fair Housing Act. We provide opportunity for growth in our communities through Chadron YouthBuild, an education and job training program for 16-24 year old young adults who transform their lives while they transform their communities. We stand for rural economic development by creating affordable housing opportunities. We stand for the transformation of young adults by providing leadership development, education and job training. We stand for sustaining the rural economy of the High Plains through community development efforts. We're High Plains Community Development Corporation and we take a stand for rural America.

Sincerely,

Marguerite Vey-Miller
Executive Director



For more information on High Plains CDC go to their website at: <http://www.highplainscdc.com> .

Ho-Chunk Community Development Corporation (HCCDC): Mission Statement

To raise the socioeconomic and educational levels for Native American communities and the people of Thurston County in Nebraska.

This mission will be accomplished through

- providing employment
- expanding opportunities to own, manage and operate business enterprises in economically depressed areas
- identifying and assembling public and private resources for community development
- expanding housing opportunities for low-income persons and families.

To learn more about HCCDC go to their website at: <http://hochunkcdc.org/> .

Holt County Economic Development: Holt County Economic Development is focused on these priorities:

Growing our **Existing Businesses** by providing technical assistance, including loan funding, business planning and business transfer assistance.

Helping build future leaders for today and tomorrow by focusing on **Leadership Development** through the HomeTown Leadership Institute.

Recruiting our **Youth & Young Families** back to the county by keeping an open dialogue with our high students and former alumni.

Building permanent savings accounts for our communities through **Philanthropy and Community Foundations**.

Alone, our communities can do little to effectively spur positive growth, but by sharing our resources and ideas we can build a stronger Holt County through **Regional Collaboration**

To learn more about Holt County Economic Development go to their website at: <http://www.holtcountynebraska.com/index-2.html> .

Jefferson County Economic Development Corporation (JCEDC): To learn about JCEDC call them at 402-729-4061 or fax them at 402-729-6472.

Kearney County Economic Development Agency (KCEDA): The Kearney County Economic Development Agency, known as KCEDA was started in 2004 to provide current and potential businesses with low interest loans. These loans can be used to expand, improve, and or start businesses in Kearney County. KCEDA also strives to improve the county by encouraging tourism, entrepreneurship and community development. KCEDA is funded by the communities it serves including Axtell, Heartwell, Minden, and Wilcox.

To learn more about KCEDA go to their website at: www.kearneycounty.net .

Keith County Area Development (KCAD): Keith County Area Development is an organization formed by concerned citizens to responsibly promote new development, assist existing businesses and maintain open relationships within the community.

To learn more about KCAD go to their website at: <http://www.kcad.org> .

Knox County Development Agency: The Knox County Development Agency was developed on September 13, 2001 through an Interlocal Cooperation Act Agreement. The purpose of the Knox County Development Agency (KCDA) was to act as a coordination, education and service organization to foster, promote, encourage, develop, research, analyze and to increase the knowledge, appreciation and practice of economic development and to help to preserve and enhance the Knox County community's economic growth.

To learn more about Knox County Development Agency go to their website at: <http://www.co.knox.ne.us/development.html> .

Legal Aid of Nebraska: Our Mission: To promote Justice, Dignity, Hope and Self-sufficiency through quality civil legal aid for those who have no where else to turn.

To learn more about Legal Aid of Nebraska go to their website at: <http://www.legalaidofnebraska.com/> .

Loup Power District Development Department (LPD): The District provides economic development services to Columbus and area communities in Boone, Colfax, Nance and Platte Counties and the City of Newman Grove in Madison County. Our core mission is the support of companies who ship products, services, information and knowledge to outside the four county area and return capital (revenues) back to the community.

To learn more about LPD go to their website at: <http://www.loup.com/ind-dev.asp> .

McCook Economic Development Corporation (MEDC): McCook Industrial Development Corporation was created on January 23, 1985 by a group of business and community minded individuals who wanted to provide a more diversified economic base for McCook and the surrounding area. Now known as the McCook Economic Development Corporation (MEDC), the mission of the organization has not changed - to facilitate the formation, retention, attraction, and expansion of businesses in McCook and the surrounding area.

To learn more about MEDC go to their website at: <http://www.mccookne.org/> .

Medicine Valley Economic Development Corporation (MVEDC): Medicine Valley Economic Development Corporation (MVEDC) was formed in 1998 to broaden and stabilize the economic base of the Medicine Valley Area. The Medicine Valley Area is in Southwest Nebraska and includes the communities of Wellfleet, Maywood, Curtis, Stockville and Moorefield. In 2004 the voters of Curtis approved an economic development plan and a ½% sales tax to fund it. These funds can be used for a variety of projects and can be used outside of Curtis in Frontier County. MVEDC works closely with the Nebraska Department of Economic Development and others to be sure that area businesses are aware of the programs offered to enhance business development.

To learn more about MVEDC go to their website at: <http://www.curtis-ne.com/economicdevelopment.html> .

Nance County Foundation, Inc.: The Nance County Foundation, Inc. is a Nebraska non-profit corporation which has been established (1992) to accept gifts and contributions of any size for the benefit of Nance County and its communities. Foundation assets are invested and the principal and/or income used for grants to organizations as designated by donor, or if there is no designation, to qualified organizations in the Nance County area which meet the needs of the County.

To learn more about the Nance County Foundation, Inc. go to their website at: <http://www.nancecountyfoundation.org/index.html> .

Nebraska City Area EDC: Our number one priority is to provide economic development services which focus on the county's priorities, supported by county-wide business and industry. We strive to meet these needs—by providing diverse job opportunities and increasing capital investment and growth of county-wide valuation—by focusing our efforts on industrial recruitment and retention, business development, entrepreneurship, leadership development and downtown redevelopment. We take our role as the County-wide leadership in economic development to heart. Working on identifying and promoting our county-wide opportunities most importantly by identifying, developing and marketing potential development sites throughout Otoe County.

To learn more about Nebraska City Area EDC go to their website at: www.nebraskacity.com .

Nebraska Economic Development Corporation (NEDCO): The Nebraska Economic Development Corporation is an IRS designated 501(c)3 non-profit corporation promoting economic development and job creation throughout Nebraska. NEDCO was established in 1987 and licensed as a Certified Development Company (CDC) by the U.S. Small Business Administration (SBA) to offer the SBA 504 Loan Program.

To learn more about NEDCO go to their website at: <http://www.nedcolans.org/> .

Nebraska Investment Finance Authority (NIFA): NIFA's mission is to serve the people of Nebraska. Within its statutory authority, NIFA is charged with providing a broad range of financial resources for agricultural, residential, manufacturing, medical and community development endeavors and providing technical assistance for activities related to these areas. NIFA's efforts are to be accomplished while preserving and growing the asset base used to provide these resources.

To learn more about NIFA go to their website at: <http://www.nifa.org/> .

Nebraska Cooperative Government: The Nebraska Cooperative Government was formed by local Nebraskans to generate income for local Nebraska communities.

To learn more about the Nebraska Cooperative Government go to their website at: <http://www.cogov.org/> .

North Central Development Center (NCDC): NCDC's mission is to promote and coordinate economic development, education and quality of life through strengthened communication in north central Nebraska.

To learn more about NCDC go to their website at: <http://www.ainsworthlinks.com/> .

Northeast Nebraska Economic Development District (NENEDD): The Northeast Nebraska Economic Development District (NENEDD) was created and recognized by the US Department of Commerce, and the Economic Development Administration (EDA) in 1977. Our main objective is to encourage cooperation between local government officials, community based organizations and the private sector. The mission of NENEDD is to build communities, empower families and advance businesses through the use of a [Comprehensive Economic Development Strategy \(CEDS\)](#).

In 2000 the District created its non-profit entity, Northeast Economic Development, Inc. (NED, Inc.). NED, Inc. was created for multiple purposes, all of which have the primary function to assist in community and economic stability of the region.

To learn more about NENEDD go to their website at: www.nenedd.org .

Nebraska Northwest Development Corporation (NNDC): Nebraska Northwest Development Corporation (NNDC) is a professional non-profit development agency ready to assist you with any business needs. Start-up, relocation, expansion and financing are some of the services we provide.

To learn more about NNDC go to their website at: <http://nndc.chadron-nebraska.com/content/view/2/3/> .

Panhandle Area Development District (PADD): The Panhandle Area Development District (PADD, sounds like a word “*pad*”) is a voluntary organization of member local governments and private interest group representation members who come together to jointly find ways to solve common local challenges and develop common opportunities within their communities.

Primary activities and responsibilities of the district include providing planning, grant writing, and technical assistance to local governments and development organizations, to assist them with their community and economics development efforts.

In addition, PADD conducts planning and research at the regional level to identify areas where multi-community and multi-county groups can work together to reduce costs and enhance local efforts.

To learn more about PADD go to their website at: <http://www.nepadd.com/> .

Phelps County Development Corporation (PCDC): The Phelps County Development Corporation, known locally as the PCDC, is a 501(c)6 not-for-profit organization formed to lead the economic development efforts in Phelps County. Backed by a quarter-cent sales tax which was voted in by residents, the PCDC offers a number of programs, including [business relocation incentives](#) and [assistance to existing businesses and start-ups](#) in the form of loans and grants.

To learn more about PCDC go to their website at: <http://justthelacenebraska.com/business/pcdc.asp> .

Polk County Economic Development Corporation: To learn about Polk County Economic Development Corporation go to their website at <http://www.polkcountyne.org/index.html>

Ponca Economic Development Corporation: To learn about the Ponca Economic Development Corporation go to their website at: <http://www.poncatribe.biz/> .

Republican River Valley Community Foundation (RRVCF): Furnas and Harlan Counties of South-Central Nebraska offers unique Nebraska economic development opportunities through an alliance of local governments, education, business leadership and technological resources that are organized and committed to the success of business.

To learn more about RRVCF go to their website at <http://furnas-harlan-partnership.org> .

Sarpy County Economic Development Corporation (Sarpy County EDC): Sarpy County Economic Development Corporation (SCEDC) was founded in 1975. SCEDC is a 501(c)(6) nonprofit membership corporation organized to assist Sarpy County and Greater Omaha growth through recruitment and development of commercial and industrial enterprises.

To learn more about Sarpy County EDC go to their website at: <http://www.selectgreateromaha.com/Sarpy-County-Economic-Development-Corporation-SCEDC-default.aspx> .

Schuyler Development Company (SDC): Retention, expansion and recruitment is the Schuyler Development Company's (SDC) primary focus in the economic development of Schuyler.

The SDC, formed in 1985, is a non-profit organization comprised of 12 directors and a full-time Economic Development Coordinator.

To learn more about SDC go to their website at: <http://www.ci.schuyler.ne.us/devCo.asp> .

Seward County Economic Development (Connect Seward County, CSC): Seward County is a thriving area where your business will grow. Local employers cite the Midwest work ethic and access to a population of almost a half million as strengths of their Seward County location. With only a 20 minute drive to downtown Lincoln, population 240,000, Seward County provides a metropolitan feel with cost of living and quality of life advantages. If you are an existing employer, entrepreneur or considering locating your business in Seward County, please contact Seward County Economic Development for data and assistance.

To learn more about Seward County Economic Development go to their website at: <http://www.connectseward.org/cs/economicdev.html> .

Sherman County Economic Development Board: The mission of the Sherman County Economic Development Board is to plan, organize, educate and enhance development in the Loup City and Sherman County area by creating, retaining & expanding businesses, and improving the quality of life through increased employment, housing, and recreational opportunities.

To learn more about the Sherman County Economic Development Board go to their website at: <http://www.shermancountyprogress.com> .

Sidney/Cheyenne County Economic Development:

Sidney voters became the first city in Nebraska history to adopt an economic development sales tax in three consecutive decades, 1988, 1997 and 2007. Cheyenne County voters also adopted an economic development fund through its Keno approval in 1992. These votes reach a high of a92 percent approval rating. The 2007 vote authorized an additional \$3 million for job creation over the next decade. The entire plan and the eligible activities are listed below. Of the \$3 million, \$500,000 was designated for the Sidney downtown area and another \$500,000 was designated to the north side of Sidney.

To learn more about the Sidney/Cheyenne County Economic Development go to their website at: <http://cityofsidney.org> .

South Central Economic Development District (SCEDD): The South Central Economic Development District is a consortium of twelve rural Nebraska counties who see improving rural economies as a regional rather than purely local issue.

In addition to a large network of contacts at local, state and federal agencies, SCEDD can assist with a wide variety of projects and enterprises for communities, businesses and individuals.

To learn more about SCEDD go to their website at: <http://www.scedd.us> .

Southeast Nebraska Development District (SENDO): To learn about SENDO go to their website at <http://www.sendonline.com/indexs.html> .

Southwest Nebraska Community Betterment Corporation (SWNCBC): Affordable housing needs surfaced during comprehensive planning for the city of Grant in the mid 1990's. After exhausting different avenues to establish housing, the Grant Chamber of Commerce and the city's economic development committee formed the new non-profit corporation in September 1999.

In addition to spearheading housing projects, SWNCBC is involved in business recruitment and retention, business support and education, tourism enhancement, technology enhancement, and community betterment programs.

The service area has been increased to serve Chase, Dundy, Hayes, Hitchcock and Perkins counties.

To learn more about SWNCBC go to their website at:

<http://www.southwestne.com/index.htm> .

St. Paul Development Corporation, Inc.: The St. Paul Development Corporation, formed June 25, 1985, is organized not for profit and the objects and purposes to be transacted and carried on are to further the economic development of St. Paul and Howard County, Nebraska and its environs and promote the general social welfare of St. Paul and Howard County, Nebraska.

To learn more about the St. Paul Development Corporation, Inc. go to their website at:

<http://stpaulnebraska.com/Pages/EDCWelcome.asp> .

Thayer County Economic Development Alliance (TCEDA): "The Thayer County Economic Development Alliance is a county-wide partnership working together to provide a strong economic base and quality of life for all Thayer County residents."

To learn more about TCEDA go to their website at: <http://www.thayercounty.org/> .

Twin Cities Development Association, Inc. (TCD): Twin Cities Development Association, Inc. (TCD) is a nonprofit organization founded in 1985 as the successor to the Scottsbluff/Gering Payroll Development Foundation. TCD provides economic development services for the communities of Scottsbluff and Gering in the Panhandle of Nebraska.

TCD formed to work with both prospective and local businesses in order to stimulate new investments and create new job opportunities for the area. The Board of Directors is comprised of nine individuals from various community interests (public officials serving as ex-officio members).

To learn more about TCD go to their website at: <http://www.tcdne.org/index.htm> .

Valentine/Cherry County Economic Development Board (VDDEDDB): "The mission of the Valentine/Cherry County Economic Development Board is to build a solid foundation for economic prosperity and growth in Cherry County, by working together to help businesses grow and expand, promote business retention, encourage new business ventures, and improve residents' quality of life."

To learn more about VDDEDDB go to their website at: <http://www.heartcity.com/> .

Valley County Economic Development Board: Economic Development is a top priority in Valley County. The Valley County Economic Development Board serves as the primary facilitative organization for economic growth and development in Valley County.

Our Mission: To encourage business retention and promote economic development while preserving the quality of life in Valley County, Nebraska.

To learn more about the Valley County Economic Development Board go to their website at: <http://www.ordnebraska.com/work/valley-county-economic-development/> .

Wayne Area Economic Development, Inc. (WAEDI): Wayne Area Economic Development represents the comprehensive economic development partnership of Wayne Area Chamber of Commerce, Main Street Wayne, and Wayne Industries.

Along with [City](#) and [County](#) support, Wayne Area Economic Development is the branded identity for regional development in the greater Wayne area.

To learn more about WAEDI go to their website at <http://www.waedi.org> .

West Central Nebraska Development District (WCNDD): In 1970 the state was divided into 26 planning regions, in 1974 there was a consolidation of the planning regions and WCNDD was organized.

To learn more about WCNDD go to their website at: <http://west-central-nebraska.com> .

Wisner Community Development (WCD): The Wisner Community Development works with the city of Wisner toward industrial development in the community. The Wisner Community Development is a nonprofit corporation with an 11-member board. Money is raised as needed. Approximately 17 acres of land in and adjacent to the community are zoned for industry. The price of this land ranges from \$2,500 to \$6,500 per acre. If you are interested in learning more about this available land, please contact the city or the Wisner Development Group.

To learn more about the WCD go to their website at: <http://www.ci.wisner.ne.us/bus.asp> .

York County Development Corporation: The mission of the York County Development Corporation is to promote and encourage quality economic growth in York County. A vision for the future, this plan puts into place specific goals and strategies that will have a positive economic impact on area businesses and the citizens of York County by recruiting new industries, good jobs and expanding the tax base of our communities. Founded in 1997, the York County Development Corporation (YCDC) is a public – private, non-profit economic development agency representing the county and nine municipalities.

To learn more about the York County Development Corporation go to their website at: <http://www.yorkdevco.com/> .

Source: The above information was taken form the website for each respective entity.

